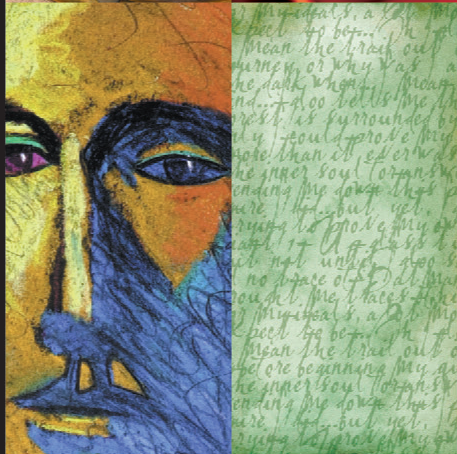
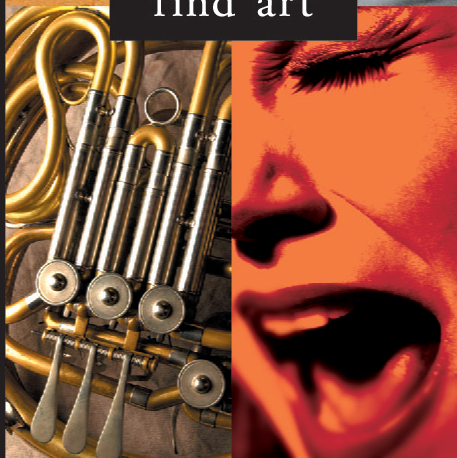


find art



# *Arts Directory*

## 2011

A directory of Spokane area arts organizations, galleries and related businesses.

# Directory of Spokane Area Arts Organizations, Galleries and Related Businesses

*(all phone numbers are within the 509 area code unless otherwise indicated)*

## ***Academy of Dance***

---

14214 E. Sprague, Spokane Valley, WA 99216

TEL: 922-3023

FAX: 922-2604

E-MAIL: kpotts777@yahoo.com

WEBSITE: www.spokaneacademyofdance.com

CONTACT: Kristen Potts, Director

Offering professional caliber training in performance Dance. Classical Ballet emphasis with additional training for Jazz, Tap, Modern, Irish Step Dance, Ballroom and Social dance. The Academy houses Academy Dance Theatre, a performing company composed of advanced level students and area professionals.

## ***Allegro-Baroque and Beyond***

---

35 W. Main St., Ste. 245, Spokane, WA 99201

TEL: 455-6865

FAX: 455-6962

E-MAIL: office@allegrobaroque.org

WEBSITE: www.allegrobaroque.org

CONTACT: David Dutton, Artistic Director

Allegro is our region's period music organization, specializing in music of the Baroque, Classic, and Romantic eras. The organization produces a series of concerts at the Bing Crosby Memorial Theater, a series of concerts in Historic Homes, and the Royal Fireworks Festival and Concert the last weekend of July. Set in 1749 England and staged in Riverfront Park, the festival offers period music, theatre and dance, visual arts, and historic fun for the whole family. Reaching thousands people each summer, the festival concludes with fireworks that are choreographed to Handel's Musick for Royal Fireworks.

## ***Amend Music Center***

---

1305 W. 14<sup>th</sup> Ave., Spokane, WA 99204

TEL: 456-0376

E-MAIL: robin@amendmusiccenter.com

WEBSITE: www.amendmusiccenter.com

Music store specializing in instrument repair, instrument rental, private lessons, accessories, instrument sales, assistive technologies, publications, special programs, and music books.

## ***American Fine Art Company***

---

P.O. Box 141292, Spokane Valley, WA 99214

TEL: 995-9958

E-MAIL: americanfineart@aol.com

WEBSITE: www.americanfineartcompany.com

CONTACT: Dean Cameron

American Fine Art Company is both publisher and marketing agent for several of the regions very talented artists as well as our historic Rose and Hopkins Native American circa 1899 Portraiture.

## ***American Guild of Organists***

---

### **Spokane Chapter**

325 S. Oak St., Spokane WA 99201

TEL: 444-4655

WEBSITE: www.spokaneago.org

CONTACT: Robert Collins, Chapter Dean

The American Guild of Organists seeks to promote high musical and professional standards in the fields of organ and choral music. Membership includes active organists, teachers, clergy, students, and organ and choral enthusiasts. The Spokane Chapter has about 60 members, sponsors local and regional events, provides certification for members, serves as community resource, and publishes a monthly newsletter.

## ***American Institute of Architects***

---

### **Spokane Chapter (AIA)**

827 W. First Avenue, Ste. #323, Spokane, WA 99201

TEL: 747-5498

FAX: 747-3688

E-MAIL: office@aiaspokane.org

WEBSITE: www.aiaspokane.org

CONTACT: Linda Hooten, Executive Director, executive-director@aiaspokane.org

AIA Spokane is the voice of the architectural profession dedicated to serving its members, advancing their value, and improving the quality of the built environment.

## ***American Needlepoint Guild***

---

C/o 2320 S. Jefferson St., Spokane, WA 99203

TEL: 747-4926

CONTACT: Lee M. McLeron

This group is affiliated with the national organization.

## ***aNeMonE Handmade Paper Flowers***

---

River Park Square, Second Level, 808 W. Main, Spokane, WA 99201

SoDo District, 309 W. 2<sup>nd</sup> Avenue, Spokane, WA 99201

TEL: 838-7037

E-MAIL: info@handmadepaperflowers.com

WEBSITE: www.handmadepaperflowers.com

CONTACT: Mary Eberle, mary@handmadepaperflowers.com

Nathan and Mary Eberle founded aNeMonE Paper Flowers shortly after creating 600 flowers for their wedding. The business has since bloomed into a full-scale paper florist, transforming this vintage craft into a unique, modern art form. aNeMonE offers unique floral art for every occasion.

## ***Area 58***

---

3036 N. Monroe St., Spokane, WA 99205

TEL: 327-0427

WEBSITE: <http://experiencespokane.com/area58/>

CONTACT: Connie Grove or Dennis Held

Area 58 exhibits regional fine artists alongside vintage furniture, fashions, books & housewares, including the cut metal and bronze sculptures of Bill Sanders. Artists rotate on a quarterly basis.

## ***Armed Forces and Aerospace Museum***

---

P.O. Box 19459, Spokane, WA 99219-9459

TEL: 244-0244 or [info@armedforces-aerospacemus.org](mailto:info@armedforces-aerospacemus.org)

E-MAIL: [mail@armedforces-aerospacemus.org](mailto:mail@armedforces-aerospacemus.org)

WEBSITE: [www.armedforces-aerospacemus.org](http://www.armedforces-aerospacemus.org)

CONTACT: Tony Delateur, President, 928-6447, [delateu@aol.com](mailto:delateu@aol.com)  
Tobby Hatley, Vice President, 953-3780, [tobby@thatleyassociates.com](mailto:tobby@thatleyassociates.com)

Exhibits of the military and aviation history of the Spokane area, representing all areas of military services serving in the Spokane Region, including Ft. Wright, Felts Field, Geiger Field, Spokane Air Repair Depot, and Fairchild Air Force Base. Museum temporarily closed pending relocation. Offices are open and will respond to inquiries.

## ***Art @ Work Gallery***

---

TEL: 363-5317

E-MAIL: [tammy.gabbert@northwestmuseum.org](mailto:tammy.gabbert@northwestmuseum.org)

CONTACT: Tammy Gabbert

A rental and sale program of the Northwest Museum of Arts & Culture, featuring work by over 70 local artists. By appointment only.

## ***Artfest***

---

Northwest Museum of Arts & Culture, 2316 W. First Ave., Spokane, WA 99201-5906

TEL: 456-3931

E-MAIL: [themac@northwestmuseum.org](mailto:themac@northwestmuseum.org)

WEBSITE: [www.northwestmuseum.org](http://www.northwestmuseum.org)

CONTACT: David Brum, [david.brum@northwestmuseum.org](mailto:david.brum@northwestmuseum.org)

Annual three day outdoor juried arts & crafts festival; music, artist demonstrations, children's festival of art, held at the Northwest Museum of Arts & Culture the weekend after Memorial Day.

## ***Art Shows***

---

P.O. Box 245, Spokane, WA 99210-0245

TEL: 922-4545

E-MAIL: [info@artshows.net](mailto:info@artshows.net)

WEBSITE: [www.artshows.net](http://www.artshows.net)

CONTACT: Don Walsdorf

Independent producer of Art Shows, including Spokane's Western Art Show the final full weekend of February, and the Kalispell Western Artists' Show. Provides free data base information on nationally recognized original art shows on [www.artshows.net](http://www.artshows.net).

## ***Artisans' Wares***

---

211 N. Wall #200, Spokane, WA 99201

TEL: 456-6030

FAX: 456-6035

E-MAIL: [dbrown@artisanswares.com](mailto:dbrown@artisanswares.com)

WEBSITE: [www.artisanswares.com](http://www.artisanswares.com)

CONTACT: Debra Brown

A gallery featuring fine American craft.

## ***Arts in Healing Through Life's Transitions***

---

### **Providence Center for Faith & Healing**

Sacred Heart Medical Center & Children's Hospital, 101 W. 8<sup>th</sup> Avenue, Spokane, WA 99204

Mailing Address: P.O. Box 2555, Spokane, WA 99220-2555

TEL: 474-3008 or 474-4917

E-MAIL: [ann.walker2@providence.org](mailto:ann.walker2@providence.org)

[kevin.bensan@providence.org](mailto:kevin.bensan@providence.org)

WEBSITE: [www.shmc.org/spiritualresources](http://www.shmc.org/spiritualresources)

CONTACT: Kevin Bensan

Ann Walker

Providence Center for Faith & Healing at Sacred Heart Medical Center has committed itself to developing a vibrant program to integrate the arts into the healing experience of all its patients. The hospital offers opportunities for arts-based therapies, and hopes to create the first fully-integrated Arts in Healing program in the Inland Northwest featuring full-time certified therapists in visual art, music, creative writing, and dance.

## ***Auntie's Bookstore***

---

402 W. Main, Spokane, WA 99201

TEL: 838-0206

FAX: 838-4967

E-MAIL: [read@auntiesbooks.com](mailto:read@auntiesbooks.com)

WEBSITE: [www.auntiesbooks.com](http://www.auntiesbooks.com)

Local, independent bookseller stocking all regional books.

Active, ongoing schedule of book signings and readings.

Large selection of arts related publications.

## ***Auntie's at the Square***

---

808 W. Main, Suite 253, Spokane, WA 99201

TEL: 456-4775

E-MAIL: [read@auntiesbooks.com](mailto:read@auntiesbooks.com)

WEBSITE: [www.auntiesbooks.com](http://www.auntiesbooks.com)

A branch store of the local, independent bookstore, Auntie's.

## ***Avenue West Gallery***

---

122 S. Monroe, Suite 103, Spokane, WA 99201

TEL: 838-4999

E-MAIL: [artists@avenuewestgallery.org](mailto:artists@avenuewestgallery.org)

WEBSITE: [www.avenuewestgallery.org](http://www.avenuewestgallery.org)

CONTACT: Dian Zahner, [jdzahner@comcast.net](mailto:jdzahner@comcast.net)

Avenue West Gallery is an artist cooperative of 21 local and regional Spokane artists representing oils, fabric, watercolor media, weavings, handcrafted lamps, origami, pottery, photography and more located in the heart of downtown.

## ***Baharat!!***

---

P.O. Box 4782, Spokane, WA 99220

TEL: 535-7101

E-MAIL: info@baharatdancers.com

aishaazar@raqsazar.com

WEBSITE: www.baharatdancers.com

CONTACT: A'isha Azar, Director

From Egypt, the Lavant, Saudi Arabia and other countries in distant lands, Baharat!! brings you the music, colorful costuming and spirited performances of authentic Belly Dance and Middle Eastern/North African folkloric styles. Baharat productions can be geared to any type of audience, from the casual party to the concert hall. Celebrating the diverse cultures and regions of the Middle East through music, colorful costuming and dance.

## ***Ballet Arts Academy***

---

109 West Pacific Ave., Spokane WA 99201

TEL: 838-5705

E-MAIL: daskegard@yahoo.com

WEBSITE: http://www.balletartsacademy.net/

CONTACT: Dodie Askegard

Classical Ballet school offering classes 4 yr. - adult. Classes in contemporary dance available. Sponsored annual events include a Spring Recital and New Years Eve "Ballet and Bubbly" in conjunction with Theatre Ballet of Spokane.

## ***Ballet Classique***

---

1301 W. 14th Ave., Spokane, WA 99204

TEL: 509-455-4528

CONTACT: Lael Martin

Ballet Classique provides the opportunity to learn the discipline and art of classical ballet while pursuing growth as an individual. Classes are available for ages 3 to adult, and from beginning to advanced levels. Students will have an understanding of repertoire, classical music, and develop solid ballet technique. Students have several performing opportunities every year.

## ***Barnes & Noble - Spokane Valley***

---

15310 E. Indiana Ave., Spokane, WA 99216

TEL: 922-4104

FAX: 922-1729

E-MAIL: CRM2951@bn.com

WEBSITE: www.bn.com

CONTACT: Pat Branchley, Community Relations Mgr.

Our goal is to serve the community with strong ties to local organizations with an emphasis on the literary, arts, and educational community. We offer a variety of community events and discussion groups that support the Spokane area's interests. These include monthly book clubs, writer's club, children's storytime and events, education related events, and monthly art displays in our cafe. A monthly calendar of events is available in the store, or you may request to be on our mailing list.

## ***Barrister Winery***

---

1213 W. Railroad Ave., Spokane, WA 99201

TEL: 465-3591

E-MAIL: barristerwinery@aol.com

WEBSITE: www.barristerwinery.com

CONTACT: Greg Lipsker

The Gallery at Barrister Winery, "Art in the Alley," features monthly exhibits showcasing a featured local or regional artist. The gallery does not charge exhibiting artists a commission on the sale of any works. Opening Night for an exhibit includes an artists' reception followed by live music performed by a local blues musician.

## ***Beautiful Photo Studio***

---

703 W. 7<sup>th</sup> Ave., #320, Spokane WA 99204

TEL: 624-3517

E-MAIL: tia@yourbeautifulphoto.com

WEBSITE: www.yourbeautifulphoto.com

CONTACT: Christopher Wooley, Photographer

Professional photography for artists and performers of all kinds. From headshots to advertising campaign photography for local arts and theatre organizations, Beautiful Studio helps support the professionalism and diversity in the Spokane Arts scene.

## ***Best of Broadway***

---

WestCoast Entertainment, W. 201 North River Drive, Suite

180, Spokane, WA 99201

TEL: 777-6253

800-325-SEAT (7328)

FAX: 325-7324

E-MAIL: jack.lucas@ticketwest.com

lerria.schuh@ticketwest.com

WEBSITE: www.bestofbroadwayspokane.com

CONTACT: Jack G. Lucas, President

Lerria A. Schuh, Director of Marketing

For over 20 years, WestCoast Entertainment has presented national touring Broadway musicals as part of The Best of Broadway Series at the INB Performing Arts Center in Spokane. Over 1.5 million patrons have attended WestCoast Entertainment productions including "The Phantom of the Opera," "Disney's The Lion King," "Les Misérables," "Cats," "Miss Saigon," and many more. Annual seasons extend September – May, and typically include 4 – 8 productions per year. For information on this year's season, visit www.bestofbroadwayspokane.com.

## ***The Big Dipper***

---

171 S. Washington, Spokane, WA. 99201

TEL: (509) 747-8036

CONTACT: Steve Spickard

An all ages music venue located on the corner of 2nd and Washington in downtown Spokane. Also available for private events.

## ***Big Fish NW Talent Representation***

---

TEL: 328-FISH (3474) ext. 2  
877-424-4347 ext. 2  
FAX: 479-9396  
E-MAIL: info@bigfishnw.com  
WEBSITE: www.bigfishnw.com  
CONTACT: Becky Reilly, Agency Director, becky@bigfishnw.com

Representing hundreds of actors, voices and commercial print talent throughout the Pacific Northwest. Commission based revenue only.

## ***Bing Crosby Theater***

---

901 W. Sprague, Spokane, WA 99201-4014

TEL: 227-7404 (office)  
227-7638 (message)

E-MAIL: michael@bingcrosbytheater.com  
WEBSITE: www.bingcrosbytheater.com  
CONTACT: Mike Smith, Manager

758 seat elegantly restored Neo-Classical Theater. Available for theater, concerts, private performances, conferences, and weddings. Gallery space features exhibits of regional artists.

## ***The Blue Door Theatre***

---

Performance/Classes Address: 815 W. Garland Ave., Spokane, WA 99205

Mailing Address: P.O. Box 9286, Spokane, WA 99209

TEL: 747-7045  
E-MAIL: info@bluedoortheatre.com  
WEBSITE: www.bluedoortheatre.com  
CONTACT: Joe V. Martin, Assistant Director/Business Director

The Blue Door Theatre is dedicated to the advancement of improvisation and the performing arts through innovative entertainment and education.

## ***BOBfest***

---

808 W. Spokane Falls Blvd., Spokane, WA 99201

TEL: 625-6440  
FAX: 625-6059  
E-MAIL: chaseyouthcommission@spokanecity.org  
WEBSITE: www.chaseyouth.org  
CONTACT: Spencer Koonz, skoonz@ymcaspokane.org  
Mike LeaderCharge, mleadercharge@spokanecity.org

Sponsored by the Chase Youth Commission, YMCA, and Hoffman Music, BOBfest (Battle of the Bands) is an annual event held in Riverfront Park in mid-June, highlighting the musical talent of local youth. BOBfest is an opportunity for Spokane to help launch local teen musicians toward a musical career. Selected groups participate in a musicians' clinic, recorded their own original song in a professional recording studio, and perform live in Riverfront Park with a professional backline and road crew.

## ***Box 'N' Hat Players***

---

c/o Spokane Civic Theatre, 1020 N. Howard, Spokane, WA 99201

TEL: 325-1413  
FAX: 325-9287  
E-MAIL: yvonne@spokanecivictheatre.com  
WEBSITE: www.spokanecivictheatre.com  
CONTACT: Yvonne A.K. Johnson

Since 1985, Box 'n' Hat Players has served as a springboard for the vocal, dance and dramatic talents of the city's best young performers ranging in age from 11 to 18. The Box 'n' Hat Players are available to entertain at parties, clubs, openings, conventions, senior centers... any special event or program.

## ***Brick Wall Gallery***

---

530 W. Main, Skywalk Level, Spokane, WA 99201

TEL: 928-7721  
E-MAIL: jnuess@hei.net  
WEBSITE: www.thebrickwallgallery.com  
CONTACT: Joe Nuess

The gallery offers the work of Joe Nuess and Richard Heinzen and a new featured photographer each month.

## ***Cathedral Arts Workshop***

---

Cathedral of St. John the Evangelist, 127 E. 12<sup>th</sup> Ave., Spokane, WA 99202

TEL: 838-4277 ex. 37  
FAX: 747-4403  
E-MAIL: cathedralartsworkshop@st.johns-cathedral.org  
WEBSITE: www.stjohns-cathedral.org/arts/arts\_index.php  
CONTACT: Lenora Lopez Schindler, Director

Cathedral Arts Workshop is a multidimensional educational program consisting of Fine Arts, Applied Arts and Creative Writing, taught within the beautiful and historic Cathedral of St. John the Evangelist. The mission at Cathedral Arts Workshop is to foster explorations into the intersections of art making, writing and spiritual development, to see the world around us, "with the eyes of our hearts enlightened."

## ***Celtic Music Spokane***

---

P.O. Box 4816, Spokane, WA 99220

TEL: 922-5931  
E-MAIL: tickets@celticmusicspokane.com  
WEBSITE: www.celticmusicspokane.com

Celtic Music Spokane is a non-profit organization that brings international, national, regional, and local Celtic musicians to Spokane area concert stages, schools, and organizations, and hosts musicians workshops, dances, and other activities to enrich, educate, and entertain the community.

## ***Center Pointe***

---

1408 N. Washington, Spokane, WA 99201

TEL: 325-5451

FAX: 344-1083

E-MAIL: centerpointe@qwestoffice.net

WEBSITE: www.centerpointeactivities.com

CONTACT: Richard 'Spike' Cunningham, Executive Director  
Center Pointe is a safe, barrier-free environment for recreation, socialization, and educational activities to encourage participants to become independent, develop friendships and be of service to others, thereby fostering a positive self-image.

## ***Chase Gallery at City Hall***

---

808 W. Spokane Falls Blvd., Spokane, WA 99201-3333

TEL: 625-6050

FAX: 625-6059

E-MAIL: arts@spokanecity.org

WEBSITE: www.spokanearts.org

CONTACT: Karen Mobley, Director, kmobley@spokanecity.org

Presenting changing exhibits of work by local and regional artists, and other community related exhibits. Open Monday evenings through City Council meetings and all days that City Hall is open. Staffed by the City Arts Department as a program of the Spokane Arts Commission.

## ***Chris' Upstage Performance Studio***

---

Studio Address: 6205 E Mansfield Ave., Ste A, Spokane Valley, WA 99212

Mailing Address: P.O. Box 1461, Mead WA 99021-1461

TEL: 990-3434

E-MAIL: upstagestudio5678@yahoo.com

WEBSITE: www.upstageperformancestudio.com

CONTACT: Chris Anderson

Chris' Upstage Performance Studio is committed to providing quality instruction that emphasizes, but is not limited to, technique, attitude and choreography. Through our instruction, students will learn terminology and develop their passion for the art form they choose.

## ***Christian Youth Theater (CYT) Spokane***

---

Studio Address: 6205 E. Mansfield, Suite A, Spokane Valley, WA 99212

Office/Mailing Address: PO Box 11932, Spokane Valley, WA 99211

TEL: 487-6540

FAX: 691-0237

E-MAIL: office@cytspokane.com

WEBSITE: www.cytspokane.com

CONTACT: Mallory McElroy – Administrative Assistant,  
Mark DeSaulnier - Executive Artistic Director,  
mark@cytspokane.com

Christian Youth Theater is an after-school theater arts training program for kids ages 6 - 18. CYT, with two locations, is committed to providing wholesome family entertainment while teaching children and young adults theater skills with an emphasis on Judeo-Christian values. Classes are offered three times a year. Each term culminates in the performance of a fully staged musical. CYT - Quality educational theater for children...by children.

## ***Clarion Brass Ensemble***

---

1013 E. Mission, Spokane, WA 99202-1925

TEL: 489-4633

E-MAIL: figaro@figarotunes.com

WEBSITE: www.figarotunes.com

CONTACT: William Berry

Twelve-piece brass ensemble plays exhilarating range of styles, dynamics, and colors, combining the precision of a chamber group with the expressive possibilities available to the depth and number of its instrumentation. Annual Candlelight Christmas Concerts. Worldwide best selling Nutcracker Suite Dreams CD available at local record outlets.

## ***Clay Connection***

---

714 E. Sprague, Spokane, WA 99202

TEL: 747-6171

FAX: 747-6177

E-MAIL: clayconnection@hotmail.com

WEBSITE: www.clayconnection.net

CONTACT: Kelly Greenfield

Clay Connection offers a full line of supplies, tools and equipment for the studio potter. Services include hourly and monthly studio rental plans, beginner and intermediate pottery classes, firing of pottery, and glass fusing classes and supplies. Clay Connection is a corporate member of the National Council for Education in the Ceramic Arts (NCECA) and the Potters Council of the American Ceramic Society.

## ***Clearstory Gallery***

---

1202 N. Government Way, Spokane, WA 99224

TEL: 327-4422

E-MAIL: gallery@lifecenter.net

WEBSITE: www.clearstorygallery.com

CONTACT: Susan Cowger, Gallery Director

Located at Life Center Foursquare Church, the Clearstory Gallery vision is to connect people to God, whether that is through the influence of image, color, and form, or as pure adoration as one encounters God in the beauty/reality/power of art.

## ***College Road Recording***

---

2916 N. Monroe, Spokane, WA 99205

TEL: 465-9146

E-MAIL: collegeroad@aol.com

WEBSITE: www.collegeroadrecording.com

CONTACT: Wade Thames

College Road Recording is a studio designed from the musician's perspective. Our goal is to provide a studio that local and regional musician's can afford, that has great equipment, a relaxed environment, and a viable way to manufacture their finished product. From demo's to full CD's College Road Recording can make your project a success.

## ***Community Minded Television (CMTV)***

---

25 W. Main Ave, Ste. 436, Spokane, WA 99201

TEL: (509) 209-2650

E-MAIL: robertf@community-minded.org

cmtv@community-minded.org

WEBSITE: www.community-mindedtv.org

CONTACT: Robert Foote, General Manager

Community-Minded TV (Comcast Cable Channel 14) is an innovative media outlet with a host of digital programming created and produced with local residents and our region's sustainability in mind -- a progressive, inclusive medium to encourage open dialogue and create opportunities for the community at large.

## ***Connoisseur Concerts***

---

315 W. Mission #18, Spokane, WA 99201

TEL: 326-4942

E-MAIL: Gertrude.Harvey@frontier.com

WEBSITE: www.nwbachfest.com

CONTACT: Gertrude Harvey, Executive Director  
Presents annual Northwest Bach Festival (February), Gunther Schuller, Artistic Director, in local landmark venues and Mozart on a Summer's Eve series (July). Verne Windham, Artistic Director, outdoors in Spokane parks and other garden venues. Tickets available at TicketsWest outlets or by telephone: (800) 325-SEAT.

## ***Contemporary Arts Alliance (CAA) – (SpIFF - Spokane International Film Festival)***

---

2424 W. 2nd Ave., Spokane, WA 99204

TEL: (509) 720-7743

E-MAIL: Ironald@spokanefilmfestival.org

WEBSITE: www.spokanefilmfestival.org

CONTACT: Leslie Ronald

A non-profit group of artists, architects, and art patrons collaborating to present contemporary art of the highest quality. Our central intent is to attract and engage a diverse audience with the finest work of regional, national, and international artists.

## ***Corbin Art Center***

---

507 W. Seventh Ave., Spokane, WA 99204-2709 (Seventh Avenue and Stevens)

TEL: 625-6677

FAX: 625-6684

E-MAIL: lmandyke@spokanecity.org

WEBSITE: www.spokaneparks.org/Recreation/CAC.htm

CONTACT: Lynn Mandyke, Director

A program of the Spokane Parks and Recreation Department. Corbin Art Center offers a series of quarterly fine art and craft classes and workshops for all ages, special events and a rental program. The Center is housed in the historic D.C. Corbin House and is adjacent to the Moore-Turner Heritage Gardens. The house and gardens are listed on the local, state, and national historic registers and situated in the Marycliff/Cliff Park National Register Historic District. Sign up for classes through the Spokane Parks and Recreation Department.

## ***The Cowgirl Co-Op***

---

20424 N. Dunn Rd, Colbert, WA 99005

TEL:

E-MAIL: info@cowgirlcoop.com

WEBSITE: www.cowgirlcoop.com

CONTACT:

Three cowgirls created The Cowgirl Co-op as a place to meet over food, art, animals; a place to get back in touch with the land, but mostly...a place to kick up a little Wild West Fun!

## ***Dance Center of Spokane***

---

1407 E. 57th Avenue, Spokane, WA 99223

TEL: 448-2464

FAX: 448-9031

E-MAIL: dancespokane@qwestoffice.net

WEBSITE: www.dancecenterofspokane.com

CONTACT: Shari Davis

The Dance Center of Spokane emphasizes the enjoyment and performance of dance in many styles including Ballet, Tap, Jazz, Hip Hop, Gymnastics, and Mom and Me, with classes for age 1 to adult. The Dance Center's resident company is Spokane Ballet Ensemble, performing at grade schools and charitable events.

## ***Davenport District Arts Board***

---

P.O. Box 1109, Spokane, WA 99210-1109

TEL: 995-9544

E-MAIL: accessspokane@comcast.net

moleniacz@downtown.spokane.net

WEBSITE: www.davenportdistrict.org

CONTACT: Phil Sandifur, President, 995-9544

Marla Nunberg-Oleniacz, Downtown Spokane Partnership, 456-0580

The Davenport District Arts Board is dedicated to the development of the Davenport District, a vibrant arts district in historic downtown Spokane celebrating cultural and economic rebirth. Partner organizations in the Davenport District include the Spokane Arts Commission and the Downtown Spokane Partnership.

## ***DeColores Handbell Choir***

---

P. O. Box 9189, Spokane, WA 99209-9189

TEL: 327-3772

E-MAIL: bellbuggyx@aol.com

CONTACT: Blanche Kangas

Auditioned community handbell choir of thirteen ringers ringing from ministry to event programs.

## ***Deep Creek Consulting***

---

3721 N. Garfield Rd., Spokane, WA 99224

TEL: 244-8559

FAX: 244-8386

E-MAIL: john@deepcreekconsulting.com

WEBSITE: www.deepcreekconsulting.com

CONTACT: John Hancock

Providing services in research, feasibility, strategy, cultivation, writing & editing, submissions, advocacy, public acknowledgement, reporting, and project consortia.

## ***Dolmen Printmakers***

---

239 W. Cleveland Ave., Spokane, WA 99205

TEL: 325-8125

E-MAIL: [crwilson@icehouse.net](mailto:crwilson@icehouse.net)

CONTACT: Cyndy Wilson, Director

A non-profit organization dedicated to teaching/educating the public about printmaking. This involves exhibits, workshops, lectures and eventually regularly offered classes. Dolmen also offers artists a facility in which they can inexpensively create and print/edition relief and intaglio prints.

## ***Downtown Spokane Partnership (DSP)***

---

211 North Wall St, #300, Spokane, WA 99201

TEL: 456-0580

FAX: 747-3127

E-MAIL: [mnunberg@DowntownSpokane.net](mailto:mnunberg@DowntownSpokane.net)

WEBSITE: [www.downtownspokane.net](http://www.downtownspokane.net)

CONTACT: Marla Nunberg, Vice President

The Downtown Spokane Partnership (DSP) is a private, non-profit membership organization that serves as Spokane's central city advocate and service provider dedicated to the creation of a dynamic, vital and sustainable Downtown as the basis of an economically healthy region.

## ***Dutch's, Inc.***

---

415 W. Main Ave., Spokane, WA 99201

TEL: 747-5284

E-MAIL: [dutchs@dutchs.com](mailto:dutchs@dutchs.com)

WEBSITE: [www.dutchs.com](http://www.dutchs.com)

Specializing in vintage guitars and classical instruments.

## ***Eastern Washington State Historical Society/ Northwest Museum of Arts & Culture***

---

2316 W. 1st Ave., Spokane, WA 99201-5906

TEL: 456-3931

FAX: 363-5303

E-MAIL: [themac@northwestmuseum.org](mailto:themac@northwestmuseum.org)

WEBSITE: [www.northwestmuseum.org](http://www.northwestmuseum.org)

CONTACT: Ronald Rector, Executive Director, [ron.rector@northwestmuseum.org](mailto:ron.rector@northwestmuseum.org)

Ben Mitchell, Senior Curator of Art, [ben.mitchell@northwestmuseum.org](mailto:ben.mitchell@northwestmuseum.org)

Tammy Gabbert, Art@Work Manager, [tammy.gabbert@northwestmuseum.org](mailto:tammy.gabbert@northwestmuseum.org)

The Society, a private non-profit 501(c)(3) organization, maintains and preserves, for the use and benefit of the people of the state, those articles which illustrate the history of the state and its cultural expressions. The Society fulfills its mission by collecting, preserving, and interpreting relevant material and by involving and stimulating people through integrated exhibits and programs. The Society actively involves the community to plan exhibits and activities that accurately reflect the region's diverse cultural heritage.

## ***Eastern Washington University (EWU)***

---

526 5th Street, Cheney, WA 99004

### **Department of Art**

140 Art, Cheney, WA 99004-2401

TEL: 359-2494

FAX: 359-7810

E-MAIL: [msimonsen@ewu.edu](mailto:msimonsen@ewu.edu)

WEBSITE: [www.visual.arts.ewu.edu](http://www.visual.arts.ewu.edu)

CONTACT: Mina Simonsen

### **Department of Music**

119 Music, Eastern Washington University, Cheney, WA 99004-2434

TEL: 359-6129

FAX: 359-7028

E-MAIL: [pwinters@ewu.edu](mailto:pwinters@ewu.edu)

CONTACT: Patrick Winters, Chair

Concerts during school year for students, faculty, and guest artists. Call for schedule.

### **Department of Theatre & Film**

210 Theatre, Eastern Washington University, Cheney, WA 99004

TEL: 359-2459

FAX: 359-6103

E-MAIL: [jray@ewu.edu](mailto:jray@ewu.edu)

WEBSITE: <http://www.ewu.edu/CALE/Programs/Theater.xml>

CONTACT: Linda Douglas

Presents 3 productions per year.

### **Creative Writing Department (Spokane Campus)**

501 N Riverpoint Blvd, Suite 425, Spokane, WA 99202

TEL: 359-4956

FAX: 455-1252

E-MAIL: [prussell@mail.ewu.edu](mailto:prussell@mail.ewu.edu)

WEBSITE: [www.ewumfa.com](http://www.ewumfa.com)

CONTACT: Pam Russell

Offers Writers in the Community Program. Presents poets and authors in an annual series of readings open to the public at various downtown locations.

## ***Eastern Washington University Gallery of Art***

---

EWU Fine Arts Building, 140 Art, Cheney, WA 99004

TEL: 359-7070

FAX: 359-2493

E-MAIL: [msimonson@ewu.edu](mailto:msimonson@ewu.edu)

CONTACT: Nancy Hathaway, 359-7070

Exhibits by students, local, regional and national artists.

## ***Eld Hus Vetro Glass Design Studio***

---

11616 E. Montgomery Dr. Suite 50, Spokane, WA 99206

E-MAIL: [info@theeldhus.com](mailto:info@theeldhus.com)

CONTACT: William Hagy

Custom work made available for interior design, personal home, or office on every level. Commission work is on a consultation basis so please feel free to email for further inquiry.

## ***Embroiderers' Guild of America, Inc.***

---

### **Mt. Spokane Chapter**

35345 Oehlschlaeger Rd. N., Reardan, WA 99029

TEL: 796-2189

E-MAIL: reomsn@hughes.net

CONTACT: Marcia Niles, President

The Embroiderers' Guild of America is a national, non-profit educational organization founded in 1958 to foster high standards of design, color, and workmanship in embroidery; to teach the embroidery arts; to preserve our national needle arts heritage. We offer programs, group correspondence courses, field trips, slide shows and the opportunity to share ideas, techniques and favorite things. Members also receive a quarterly magazine, Needle Arts, and a chapter newsletter.

### ***Empire Dance Shop***

---

131 South Sherman St., Spokane, WA 99202

TEL: 747-7808

FAX: 838-6929

E-MAIL: service@empiredanceshop.com

WEBSITE: www.empiredanceshop.com

CONTACT: Phillip J. Broadbent, Owner

Serving Spokane's performing arts and dancers since 1950.

Offering product knowledge and personalized attention

with a wide selection of shoes, leotards, tights, warm-ups, accessories.

### ***Far West Billiards***

---

1001 W. 1st Ave, Spokane, WA 99201

TEL: 455-3429

WEBSITE: www.farwestbilliards.com

HOURS: Monday-Saturday 3pm-close; Sunday 1pm-close

CONTACT: Jackindra Franks

Bar and billiard hall featuring a rotating gallery of artwork by local artists.

### ***F.A.V.E.S. - Film And Video Enthusiasts of Spokane***

---

Magic Lantern Theater, 25 W. Main, Spokane, WA 99201

TEL: 444-3088

E-MAIL: announcements@favesblog.com

WEBSITE: www.favesblog.com

CONTACT: Tom Dineen, admin@favesblog.com

Community Minded Television and the Magic Lantern Theater have partnered to develop a new film and video organization call F.A.V.E.S. - Film And Video Enthusiasts of Spokane. The general membership "social event" happens the last Tuesday of each month at the Magic Lantern Theatre with a no host "cocktail hour" at Isabella's Restaurant and Gin Joint from 5:30-6:30pm and the formal presentation to begin thereafter in the theatre.

## ***First Night Spokane***

---

P.O. Box 8348, Spokane, WA 99203

TEL: 456-0580, ext. 101

E-MAIL: info@firstnightspokane.org

WEBSITE: www.firstnightspokane.org

CONTACT: Chris Martin, Executive Director, chris@

firstnightspokane.org

Lona Barnum, Associate Director, lona@

firstnightspokane.org

On New Year's Eve, Spokane joins more than 200 cities for First Night®, an alcohol-free celebration of the city's arts and entertainment. From the afternoon Children's Festival to the Fireworks Finale at midnight in Riverfront Park, actors, musicians, dancers, visual artists and performers fill venues throughout the downtown area. Admission buttons for the entire event, including all venues and performances, are \$10, with free admission for children 10 and under when accompanied by a button-wearing adult.

### ***The Fox Theater***

#### ***(Martin Woldson Theater at The Fox)***

---

1001 W. Sprague, Spokane, WA 99201

Mail: PO Box 363, Spokane, Washington 99210

TEL: 624-5992

FAX: 747-7165

E-MAIL: brenda@foxtheaterspokane.com

annie@foxtheaterspokane.com

brian@foxtheaterspokane.com

WEBSITE: www.foxtheaterspokane.com

CONTACT: Brenda Nienhouse, Executive Director  
Kathy Gustafson, Marketing and Public  
Relations Manager

Brian Ritter, Operations & Technical Director

The newly restored 1,630 seat The Martin Woldson Theater at the Fox (The Fox Theater) is an art deco style multi-purpose performing arts auditorium, and home of the Spokane Symphony.

### ***Gallery 1889***

---

2124 W. Second Ave., Spokane, WA 99204

TEL: 624-4957

E-MAIL: rhedi@gallery1889.com

WEBSITE: www.gallery1889.com

CONTACT: Rhedi Williams Red

A unique collection of custom watercolors by the renowned artist Rhedi Williams Red. Call for an appointment.

### ***Gallery of THUM'***

---

2910 N. Monroe St., Spokane, WA 99205

TEL: 413-1489

E-MAIL: galleryofthum@hotmail.com

WEBSITE: www.galleryofthum.com

CONTACT: Cecile Charles

Fine art gallery and gift outlet.

## ***Gellhorn Gallery at Interplayers Professional Theatre***

---

174 S. Howard, Spokane, WA 99210  
TEL: 455-7529  
FAX: 624-9348  
E-MAIL: info@interplayers.com  
WEBSITE: www.interplayers.com  
Invitational exhibitions.

## ***Get Lit! Programs***

---

19 Hargreaves Hall, Cheney, WA 99994  
TEL: 359-6977  
FAX: 359-6763  
E-MAIL: dward@ewu.edu  
WEBSITE: http://www.ewu.edu/getlit  
CONTACT: Danielle Ward, Get Lit Programs Coordinator  
As a part of Eastern Washington University's College of Arts and Letters, Get Lit! Programs, coordinates a nationally recognized literary festival each April, as well as educational outreach projects throughout the year. The week long festival offerings include writing workshops, panels and discussions, readings and interviews, poetry slams, and other events celebrating reading and writing for all ages. As many as 10,000 people attend over 50 events during the festival. Our educational programs include writing residencies and author visits for K-12 schools throughout the Inland Northwest. We also host the regional competition for the national Poetry Out Loud recitation contest with participating high schools.

## ***Gonzaga University***

---

502 E. Boone Ave., Spokane, WA 99258-0001  
TEL: 328-4220  
WEBSITE: www.gonzaga.edu

### **Art Department**

502 E. Boone, Spokane, WA 99258-0003  
TEL: 313-6686  
E-MAIL: hitchcock@zagmail.gonzaga.edu  
CONTACT: Laurie Hitchcock  
Students investigate a variety of visual experiences through a study of both the studio arts and art history. Offers BA in Art.

### **Music Department**

502 E. Boone Ave., Spokane, WA 99258  
TEL: 313-6731  
E-MAIL: uhlenkott@zagmail.gonzaga.edu  
WEBSITE: www.gonzaga.edu/music  
CONTACT: Fr. Gary Uhlenkott, S.J., Chair  
Offers BA in Music and Music Education. Performance ensembles include regionally and nationally recognized vocal and instrumental groups.

### **Theatre Arts Program**

502 E. Boone Ave., Spokane, WA 99258  
TEL: 313-6657  
BOX OFFICE: 313-6553  
E-MAIL: hofland@gonzaga.edu  
WEBSITE: www.gonzaga.edu/theatrearts  
CONTACT: John Hofland, Professor/Director of Theatre  
Three main stage productions and one dance concert each year. Open auditions in all casting. Student productions, readers theatre, theatre sports. An ongoing connection to film production companies, professional theatres, and international theatre opportunities.

## **Jundt Art Museum**

Mailing Address: 502 E. Boone Ave., Spokane, WA 99258-0001  
Location Address: 202 East Cataldo, Spokane, WA 99201  
TEL: 313-6613  
313-3891 (recorded hours and exhibit information)  
E-MAIL: kaiser@gonzaga.edu  
WEBSITE: www.gonzaga.edu/jundt  
CONTACT: Karen Kaiser, Assistant Curator for Education  
Local, regional, national and international artists and Gonzaga University's collections including Chihuly glass art; Rodin sculpture.

## ***Haran Irish Dancers***

---

TEL: 994-2292  
E-MAIL: harandancer@yahoo.com  
WEBSITE: www.harandancers.com  
CONTACT: Caitlin Trusler, Instructor  
With schools in Spokane and Kettle Falls, the Haran Irish Dancers have been beloved by Northwest audiences for 15 years. With dancers from 6 to 60 and new beginners to world-class champions, our love of dance shines through in everything we do.

## ***Hispanic/Latino Resource Center (El Centro de Spokane)***

---

5th & Brown Medical Bldg., Suite 370E, 104 W. 5th Ave,  
Spokane, WA 99201  
TEL: 455-6706  
E-MAIL: elcentrode\_spokane@lycos.com  
The primary mission of the Hispanic/Latino Resource Center is to serve, advocate for, and provide access to information, referrals and educational opportunities to the Hispanic Communities of the Inland Northwest. In addition, the Center will sponsor community educational seminars.

## ***Historic Preservation – City of Spokane***

---

808 W. Spokane Falls Blvd., Spokane, WA 99201  
TEL: 625-6983  
FAX: 625-6013  
E-MAIL: bdsinfo@spokanecity.org  
WEBSITE: www.historicspokane.org  
CONTACT: Kristen Griffin, Spokane City/County Historic Preservation Officer  
Providing historic property protection and development services to the City of Spokane and Spokane County.

## ***Hoffman Music Co.***

---

1430 N. Monroe St., Spokane, WA 99201  
TEL: 444-4140  
(800) 769-3949  
E-MAIL: webmaster@hoffmanmusic.com  
WEBSITE: www.hoffmanmusic.com  
CONTACT: Earl Smith  
In business since 1913, Hoffman Music sells/rents guitars, bass, drums, PA equipment, trumpets, saxophones, flutes, clarinets, trombones, and all other band instruments and equipment. Some of their brands, Gibson, Fender, Mackie, Pearl, JBL, Yamaha, Martin.

## ***Holy Names Music Center***

---

3910 W. Custer Dr., Spokane, WA 99224-5246

TEL: 326-9516

FAX: 326-7155

E-MAIL: music@hnmc.org

WEBSITE: www.hnmc.org

CONTACT: Suzanne Bjork, Office Manager

Individual instruction available from highly qualified instructors in piano, voice, most orchestral and band instruments, as well as guitar, fiddle, bass guitar, percussion and harp. Suzuki qualified instruction in piano and strings. Jazz Studies, Kid's Voice & Woman Voice classes and Music Together for infants & toddlers offered weekly along with the Honors Chamber Music Apprenticeships for advanced students. Summer camps in piano, chamber music and composition. Open to all levels and abilities, limited financial aid available for qualified registered students. Recitals and concerts open to the public. Recital Hall, studios and meeting facilities available for rent. Some string and woodwind instrument rentals.

## ***HYPER-Formance Jazz Dance Club***

---

Mailing Address: 1312 E 56th Ave., Spokane, WA 99223

TEL: 218-4968

E-MAIL: cindy@hyperjdc.com

WEBSITE: www.hyperjdc.com

CONTACT: Cynthia Hamilton, Director

To promote dance arts, provide performance opportunities, and to construct a nucleus of trained persons to provide community outreach for the dramatic arts. Teach theatre arts, dance, and drama to low income children, from 4 up. Intermingle socio-economic strata to provide more awareness of others in the community.

## ***Ignite! Community Theatre***

---

P.O. Box 6675, Spokane, WA 99217

TEL: 993-6540

E-MAIL: ignitetheatre@comcast.net

WEBSITE: www.ignitetheatre.org

Ignite! Community Theatre is a volunteer community theatre with diverse opportunities including our Booklight Reader's Theatre, Living History program, annual Haunted House, and fully produced shows. Our Mission: To operate a community theatre with high artistic, education and ethical standards, and to serve as a resource to the community at large.

## ***INB Performing Arts Center***

---

334 W. Spokane Falls Blvd., Spokane, WA 99201

TEL: 279-7000

FAX: 259-7050

E-MAIL: jboxley@spokanepfd.org

WEBSITE: www.inbpac.com

CONTACT: Johnna Boxley, General Manager

A legacy from the Spokane Worlds' Fair in 1974, this facility has hosted everyone from Bette Midler to Les Misérables. The elegant 2,700 seat house is adaptable for symphony concerts, ballet, grand opera, road shows, country and rock music spectaculars, musical stage productions, travelogues, conventions and lectures.

## ***Ink To Media***

---

523 N. Pines Rd. Suite B, Spokane, WA 99206

TEL: 863-9125

E-MAIL: inktomedia@yahoo.com

WEBSITE: www.inktomedia.com

CONTACT: Justin Lentz

Ink To Media provides a variety of artistic and digital services from fine art reproductions to digital photo printing, fine art scanning. Ink To Media Gallery features monthly exhibits beginning on "The Last Friday" of every month.

## ***Inland Crafts***

---

520 W. 16th, Spokane, WA 99203

TEL: 995-7956 or 624-8566

WEBSITE: www.inlandcrafts.org

E-MAIL: contact@inlandcrafts.org

CONTACT: Louise Kodis, Vice President, 624-8566

Inland Crafts, a non-profit contemporary crafts advocacy corporation, maintains a presence as a public resource for craft awareness by publishing an index of regional craft artists and by serving as representatives of contemporary crafts makers of the Pacific Northwest. Inland Crafts provides a professional setting for an annual sale and exhibition of contemporary craft artists, providing an opportunity for the public to meet and understand craft processes. Inland Crafts provides educational video and slide shows, presenting contemporary regional craft artists for both adult and youth audiences. Inland Crafts strives to increase the appreciation and understanding of contemporary crafts throughout the Inland Empire.

## ***Inland Empire Blues Society***

---

P. O. Box 9126, Spokane, WA 99209-9126

TEL: 534-8185

FAX: 534-1081

E-MAIL: ieblues@ieblues.org

WEBSITE: www.ieblues.org

Society members receive the Inside Blues newsletter & monthly Blues Calendar, discounts on Blues Society events and purchases at participating businesses.

## ***Inland Empire Gardeners***

---

P.O. Box 13184, Spokane Valley, WA 99213-3184

TEL: 535-8434

E-MAIL: tieg@comcast.net

WEBSITE: www.tieg.org

CONTACT: ViAnn Meyer, President

The Inland Empire Gardeners promotes the joy of gardening in the Inland Northwest. Sponsors of the annual Garden Expo, Garden of the Month Contest and Plant a Row for the Hungry.

## ***Inland Empire Region of The Society of Children's Book Writers and Illustrators***

---

1217 E. Empire Ave, Spokane, WA 99207

TEL: 482-5288

E-MAIL: [cat09tales@hotmail.com](mailto:cat09tales@hotmail.com)

WEBSITE: [www.scbwiwaid.org](http://www.scbwiwaid.org)

CONTACT: Deborah Fredericks, Regional Advisor  
The Society of Children's Book Writers and Illustrators (SCBWI) is an international organization devoted to children's literature. SCBWI is for people at all stages in their careers. Our regional group covers Eastern Washington and North Idaho. Our quarterly mini-workshops offer practical training, support and advice. Our regional conference in the fall of each year also includes editorial and agent consultations.

## ***Inland Northwest Bluegrass Association***

---

P.O. Box 942, Spokane, WA 99210

TEL: 891-8558

E-MAIL: [info@spokanebluegrass.org](mailto:info@spokanebluegrass.org)

WEBSITE: [www.spokanebluegrass.org](http://www.spokanebluegrass.org)

CONTACT: Charlie Matthews, 891-8558, [chasmatt@q.com](mailto:chasmatt@q.com)

The Inland Northwest Bluegrass Association seeks to build public awareness of bluegrass music and provide an atmosphere in which appreciation can grow through concerts, festivals, jam sessions and other events.

## ***Inland Northwest Community Foundation***

---

618 W. Riverside Ave., Suite 302, Spokane, WA 99201

TEL: 624-2606 or toll free (888) 267-5606

FAX: 624-2608

E-MAIL: [info@inwcf.org](mailto:info@inwcf.org)

WEBSITE: [www.inwcf.org](http://www.inwcf.org)

CONTACT: Mark Hurtubise, Executive Director, [mhurtubise@inwcf.org](mailto:mhurtubise@inwcf.org)  
Linda Graham, Director of Grants, [lgraham@inwcf.org](mailto:lgraham@inwcf.org)

A community foundation with a commitment to providing an organizational funding program for the arts and humanities. Focus is on addressing social issues through the arts: accessibility, changing demographics, multicultural awareness.

## ***Inland Northwest Dance Association***

---

P.O. Box 1133, Veradale, WA 99037

TEL: 927-0972

FAX: 921-7682

E-MAIL: [isabelle@isabellesdancetime.com](mailto:isabelle@isabellesdancetime.com)

WEBSITE: [www.indaspokane.com](http://www.indaspokane.com)

CONTACT: Isabelle M. Cook

Organization to provide artistic, educational and cultural opportunities to people of all ages, races and abilities through dance activities, collaborations and partnerships. INDA hosts a major two day workshop each year in the fall. Hosts international; and nationally renowned professional dance companies for outreach and public performances. Hosts National Dance Week free event called DanceFest.

## ***Inland Northwest Drawing School***

---

Mailing Address: 624 E. 24<sup>th</sup> Ave., Spokane, WA 99203

Classes held at three locations:

Spokane Art Supply: 1303 N. Monroe, Spokane, WA 99201

Spokane Art Supply, Too: 14401 E. Sprague, Spokane Valley, WA 99216

TEL: 230-1880

E-MAIL: [info@indrawschool.com](mailto:info@indrawschool.com)

WEBSITE: [www.indrawschool.com](http://www.indrawschool.com)

CONTACT: Valerie Frey

The Inland Northwest Drawing School provides a sequential progressive art curriculum that teaches students, ages 4.5 through adult, the fundamentals of representational drawing and painting. At our schools, you will find a quiet, non-competitive non-judgmental environment where students are encouraged to draw at their own pace without performance pressure. The Inland Northwest Drawing School emphasizes the process of learning to draw, improving art skills, and expanding creativity. Our ongoing art classes run from October through mid-June with open enrollment throughout the school year. We also offer winter, spring, and summer art camps.

## ***Inland Northwest (INW) Radio***

---

703 W. 7th Ave., Spokane WA 99204

TEL: 429-8742

E-MAIL: [info@inwradio.com](mailto:info@inwradio.com)

WEBSITE: [www.inwradio.com](http://www.inwradio.com)

CONTACT: Larry Wooley

Inland Northwest Radio or INWRadio.com brings you interesting information specific to the Inland Northwest. Whether it be arts and entertainment, business, wedding planning, networking, music, food, teens, family, or favorite causes, INW Radio has something for you! Listen to interviews and reviews, information and advice on all things Inland Northwest.

## ***Inland Northwest Songwriters Association***

---

11118 E. 17th Ave., Spokane, WA 99206

TEL: 924-9422

E-MAIL: [nwpass@hotmail.com](mailto:nwpass@hotmail.com)

CONTACT: James Finn

Informative monthly meetings held to support and encourage local songwriters in the craft and business of songwriting.

## ***Inland Northwest Theatre Arts Festival (INTAF)***

---

5212 S. Stone Lane, Spokane, WA 99223

TEL: 443-9137

E-MAIL: [tommyj5215@mac.com](mailto:tommyj5215@mac.com)

CONTACT: Tom Armitage

Annual theatre arts festival for Inland Northwest high schools, including workshops, performances and speakers.

## ***Interplayers Professional Theatre***

---

174 S. Howard, Spokane, WA 99201  
TEL: 455-PLAY (7529)  
FAX: 624-9348  
E-MAIL: [boxoffice@interplayers.com](mailto:boxoffice@interplayers.com)  
[info@interplayers.com](mailto:info@interplayers.com)  
WEBSITE: [www.interplayers.com](http://www.interplayers.com)  
CONTACT: Reed McColm, Artistic Director, 455-7529  
Mary Ann McCurdy, Theatre Board Vice  
President, 456-7131

A recognized artistic institution of influence and impact, Interplayers Professional Theatre (IPT) was founded in 1980, and is Spokane's only resident professional theatre. IPT frequently brings national stage and TV/film talent to join with this region's outstanding talent base in dynamic, creative, and innovative productions.

## ***Irimi Art and Antiques***

---

112 S. Cedar, Spokane, WA 99201  
TEL: 879-4619  
WEBSITE: [www.irimionline.com](http://www.irimionline.com)  
Downtown art gallery and antique store featuring original art, antiques, wool, silks and fiber.

## ***The Japanese Cultural Center***

---

Mukogawa Fort Wright Institute, 4000 West Randolph Road, Spokane, WA 99224-5279  
TEL: 328-2971  
FAX: 325-6540  
E-MAIL: [jcc@mfwi.edu](mailto:jcc@mfwi.edu)  
WEBSITE: [www.mfwi.org/edu](http://www.mfwi.org/edu)  
CONTACT: Masahiro Ando, Director  
Candie Faulhaber-Coker, Administrative  
Assistant

Japanese Cultural Center serves as a museum and resource center with information on Japanese culture. Admission and tours are free.

## ***Jazz Guitar Society of Spokane***

---

TEL: 747-2200  
E-MAIL: [ntbps@qwest.net](mailto:ntbps@qwest.net)  
WEBSITE: [www.jazzguitarsocietyofspokane.com](http://www.jazzguitarsocietyofspokane.com)  
CONTACT: Tim Nodland

The Jazz Guitar Society of Spokane reaches guitar students from all of Eastern Washington, Northern Idaho, Western Oregon, and Western Montana. They have over 150 member guitarists and an additional 450 non-member guitarists who occasionally attend their classes and events. Their total extended internet reach is estimated to be around 10,000 guitarists and jazz enthusiasts. They fly in acclaimed jazz guitarists from New York, Los Angeles, Chicago and even Europe to Spokane to teach and play. Their membership consists of guitarists of all ages and abilities, from junior high school jazz band guitarists to middle aged and retired guitarists.

## ***J.F. Thamm Gallery***

---

11 S Washington St. Spokane, WA 99201  
TEL: 868-7434  
E-MAIL: [pinklloyd2@msn.com](mailto:pinklloyd2@msn.com)  
WEBSITE: [www.jfthammstudios.com](http://www.jfthammstudios.com)  
CONTACT: Kathleen Thamm  
J.F. Thamm Gallery features oil and acrylic paintings by artists of the Inland Northwest.

## ***Jundt Art Museum***

---

202 E. Cataldo, Spokane, WA 99201  
Mailing: 502 E. Boone Ave., Spokane, WA 99258-0001  
TEL: 313-6611  
E-MAIL: [kaiser@gonzaga.edu](mailto:kaiser@gonzaga.edu)  
WEBSITE: [www.gonzaga.edu/jundt](http://www.gonzaga.edu/jundt)  
CONTACT: Karen Kaiser, Assistant Curator for Education  
The Museum provides space for traveling exhibits and houses Gonzaga University's growing art collection. The collection includes prints from the Bolker, Baruch, and Jacobs Collections, gifts of Norman and Esther Bolker, Anne Baruch, and Jack and Kitty Jacobs, respectively; major pieces of glass art by Dale Chihuly, gifts of Jim and Joann Jundt and Duff and Dorothy Kennedy; bronze sculptures by Auguste Rodin, gifts of the Iris and B. Gerald Cantor Foundation and Collections; and paintings, ceramics, photographs and tapestries. Docent tours available; call 323-6611 for information.

## ***Kindermusik***

---

1309 W. 14th Avenue, Spokane, WA 99204  
Mailing: 4238 E 20th Ave, Spokane, WA 99223-5414  
TEL: 991-1816  
E-MAIL: [munchkins\\_to\\_mozart@hotmail.com](mailto:munchkins_to_mozart@hotmail.com)  
WEBSITE: [www.munchkins.kindermusik.net](http://www.munchkins.kindermusik.net)  
CONTACT: Teresa Birch  
Music classes for children from birth to 8 years of age. Kindermusik curriculum is utilized. Singing, Movement, Rhythms, Instrument Play, Music Reading and fun are all part of the curriculum. Some scholarships available.

## ***Knitting Factory Concert House***

---

919 E. Sprague, Spokane, WA 99201  
TEL: 244-3279  
E-MAIL: [contactspokane@knittingfactory.com](mailto:contactspokane@knittingfactory.com)  
WEBSITE: [www.knittingfactory.com](http://www.knittingfactory.com)  
CONTACT: Matt Judge, General Manager, [mjudge@knittingfactory.com](mailto:mjudge@knittingfactory.com)

The Northwest's premier concert house, restaurant, and nightclub is located in the heart of downtown Spokane. The Knitting Factory Concert House's 1,500-capacity concert venue features top performers from around the world and dance club nights weekly. The venue is also available for private functions, receptions and corporate parties.

## ***Kolva-Sullivan Gallery***

---

115 S. Adams, Suite A, Spokane, WA 99201-4105  
TEL: 462-5653  
E-MAIL: [jim@kolva.comcastbiz.net](mailto:jim@kolva.comcastbiz.net)  
CONTACT: Jim Kolva or Pat Sullivan  
By appointment. Nationally known ceramic artists. Northwest contemporary.

## ***KPBX 91.1 FM - Spokane Public Radio***

---

2319 N. Monroe, Spokane, WA 99205

TEL: 328-5729

FAX: 328-5764

E-MAIL: [kpbx@kpbx.org](mailto:kpbx@kpbx.org)

WEBSITE: [www.kpbx.org](http://www.kpbx.org)

CONTACT: Richard Kunkel, General Manager, [rkunkel@kpbx.org](mailto:rkunkel@kpbx.org)

Verne Windham, Program Director, [vwindham@kpbx.org](mailto:vwindham@kpbx.org)

Amanda Loder, News Correspondent and ATC Host, [aloder@kpbx.org](mailto:aloder@kpbx.org)

Norvel Trosst, Arts Calendar, [ntrosst@kpbx.org](mailto:ntrosst@kpbx.org)

Spokane Public Radio provides cultural and informational services and annual health and political forums for the Inland Northwest, broadcasting national NPR (National Public Radio) and local news programs. Spokane's oldest community radio station also offers a wide range of music, including classical, opera, jazz, blues, bluegrass, folk and world music. Over half of Spokane Public Radio's funding comes directly from individual listeners. KPBX produces kids concerts, the Arts Calendar and community events. Located at 91.1 FM.

## ***KPBZ 90.3 FM - Spokane Public Radio***

---

2319 N. Monroe, Spokane, WA 99205

TEL: 328-5729

FAX: 328-5764

E-MAIL: [kpbx@kpbx.org](mailto:kpbx@kpbx.org)

WEBSITE: [www.kpbx.org](http://www.kpbx.org)

CONTACT: Richard Kunkel, General Manager, [rkunkel@kpbx.org](mailto:rkunkel@kpbx.org)

Verne Windham, Program Director, [vwindham@kpbx.org](mailto:vwindham@kpbx.org)

John Vlahovich, News Director, [jvlahovich@kpbx.org](mailto:jvlahovich@kpbx.org)

Spokane Public Radio's 90.3 FM provides REMIX RADIO from the Public Radio Exchange and is "hip" repurposing of public radio features from many different radio sources. Stories of varying lengths from 30 sec to the "sky's the limit." Full of "driveway moments." Packed with learning opportunity and audio art. KPBZ is the first radio station in the world to be broadcasting in this format.

## ***Kress Gallery***

---

River Park Square, Third Level, 808 W. Main, Spokane, WA 99201

TEL: 363-5317

FAX: 363-5303

E-MAIL: [tammyg@northwestmuseum.org](mailto:tammyg@northwestmuseum.org)

CONTACT: Tammy Gabbert, Art @ Work, Northwest

## ***Museum of Arts & Culture***

---

Located behind the Atrium Cafés on Level Three of River Park Square, Kress Gallery features revolving displays of artwork by local and regional artists.

KSFC 91.9 FM - Spokane Public Radio

2319 N. Monroe, Spokane, WA 99205

TEL: 328-5729

FAX: 328-5764

E-MAIL: [kpbx@kpbx.org](mailto:kpbx@kpbx.org)

WEBSITE: [www.ksfc.org](http://www.ksfc.org)

CONTACT: Richard Kunkel, General Manager, [rkunkel@kpbx.org](mailto:rkunkel@kpbx.org)

Verne Windham, Program Director, [vwindham@kpbx.org](mailto:vwindham@kpbx.org)

Norvel Trosst, Arts Calendar, [ntrosst@kpbx.org](mailto:ntrosst@kpbx.org)

Spokane Public Radio provides cultural and informational services and annual health and political forums for the Inland Northwest, broadcasting national NPR (National Public Radio) and local news programs. Over half of Spokane Public Radio's funding comes directly from individual listeners. Located at 91.9 FM.

## ***KSPS - Public Television Channel 7***

---

3911 S. Regal, Spokane, WA 99223

TEL: 354-7800

FAX: 354-7757

E-MAIL: [claudek@spokaneschools.org](mailto:claudek@spokaneschools.org)

WEBSITE: [www.kspss.org](http://www.kspss.org)

CONTACT: Claude Kistler, General Manager

KSPS, Your Public Television is a charter PBS station (licensed to Spokane Public Schools, District 81) broadcasting from Spokane. Its original signal area includes parts of four western states (Washington, Oregon, Idaho, and Montana), as well as two western Canadian provinces (British Columbia and Alberta). The KSPS production team is regularly working on in-depth documentaries. KSPS also presents a wide variety of 'live' studio programs. Over 60,000 viewers from the northwestern United States and Western Canada support KSPS as members of the Friends of Seven.

## ***KYRS 92.3 FM / 89.9 FM - Thin Air Community Radio***

---

35 W. Main, Suite 340, Spokane, WA 99201

TEL: 747-3012

E-MAIL: [info@kyrs.org](mailto:info@kyrs.org)

WEBSITE: [www.kyrs.org](http://www.kyrs.org)

CONTACT: Lupito Flores, Station Manager, [lupito@kyrs.org](mailto:lupito@kyrs.org)  
Angela Johnson, Program Director,  
[programdirector@kyrs.org](mailto:programdirector@kyrs.org)

Thin Air Radio is Spokane's first and only low power (100 watt) community radio station. It is a non-profit, non-commercial FM station run by volunteers, providing a wide variety of programming to diverse communities and underserved groups.

## ***Lee Frame Shoppe***

---

1407 W 1st, Spokane, WA 99204  
TEL: 624-2715 or 747-3562  
E-MAIL: lfshop@qwest.net  
WEBSITE: www.leeframeshop.com  
CONTACT: Dick Hughes  
Custom framing and gallery.

## ***Liberty Lake Municipal Library***

---

23123 E. Mission Ave., Liberty Lake, WA 99019  
TEL: 232-2510  
E-MAIL: library@librarylakewa.gov  
WEBSITE: www.libertylakewa.gov/library  
CONTACT: Pamela A. Mogen, Director of Library Services  
Liberty Lake Municipal hosts monthly exhibits by area and emergent artists on the walls and shelves of the Library. Applications for exhibit may be found on our website.

## ***The Lincoln Center***

---

1316 N. Lincoln St., Spokane, WA 99201  
TEL: 327-8000  
FAX: 328-4975  
E-MAIL: info@thelincolncenterspokane.com  
WEBSITE: www.thelincolncenterspokane.com  
CONTACT: Terry Heftel, Facilities Manager  
With an elegant Art Deco inspired interior design, modern technologies and 29,000 square foot of event space, The Lincoln Center offers unrivaled hospitality and an impressive atmosphere for large galas, corporate meetings, performances and community events.

## ***L.R. Montgomery Studio Gallery***

---

428 E. 21st Ave., Spokane, WA 99203  
Mailing: P.O. Box 8244, Spokane, WA 99203  
TEL: 624-0261  
E-MAIL: lrmontgomery@lrmontgomery.com  
WEBSITE: www.lrmontgomery.com  
CONTACT: Larry or Carole Montgomery  
Call for appointment. Original hand-pulled prints, paintings, regional landscapes, drawings, and original prints of the Inland Northwest.

## ***The Magic Lantern Theatre***

---

25 W. Main Ave., Spokane, WA 99201  
TEL: 209-2383  
E-MAIL: magiclanternspokane@gmail.com  
WEBSITE: www.magiclanternspokane.com  
Featuring independent and alternative film.

## ***MALIDOMA!***

### ***World Drum and Dance Studio***

---

408 W. 3rd Ave., Spokane, WA 99201  
TEL: 624-7573  
E-MAIL: moonbear@malidoma.biz  
WEBSITE: www.malidoma.biz  
CONTACT: Michael Moon Bear  
MALIDOMA! is a working studio, staffed by professional teachers and artists in the field of traditional Drum & Dance instruction and performance. They take great pride in offering top quality personal instruction, as well as world class musical instruments, instructional materials, costuming supplies and accessories.

### ***Martin Woldson Theater at The Fox (The Fox Theater)***

---

1001 W. Sprague, Spokane, WA 99201  
Mail: PO Box 363, Spokane, Washington 99210  
TEL: 624-5992  
FAX: 747-7165  
E-MAIL: brenda@foxtheaterspokane.com  
annie@foxtheaterspokane.com  
kathy@foxtheaterspokane.com  
brian@foxtheaterspokane.com  
WEBSITE: www.foxtheaterspokane.com  
CONTACT: Brenda Nienhouse, Executive Director  
Kathy Gustafson, Marketing and Public Relations Manager  
Brian Ritter, Operations & Technical Director  
The newly restored 1,630 seat The Martin Woldson Theater at the Fox (The Fox Theater) is an art deco style multi-purpose performing arts auditorium, and home of the Spokane Symphony.

### ***MasterClass Jazz Orchestra (MCJO)***

---

TEL: 922-4784  
E-MAIL: mcjomusic@yahoo.com  
WEBSITE: www.mcjo.org  
CONTACT: Paul Plowman, pplowman@aol.com  
The MasterClass Jazz Orchestra (MCJO) is a group of professional musicians who mentor High School and College instrumentalist and vocalists. We also offer dances to the public.

### ***McManus Comedies***

---

2801 E. 12th Ave., Spokane, WA 99202  
TEL: 993-7121  
FAX: 532-1786  
E-MAIL: tim@mcmanusplays.com  
leslie@mcmanusplays.com  
H P/WEB: www.mcmanusplays.com  
CONTACT: Tim Behrens or Leslie Grove  
A theatrical/performing arts organization presenting the Humor of Patrick F. McManus starring Tim Behrens as multiple characters performing one-man stage plays/live theatrical performances.

## ***Millwood Gallery***

---

E. 9009 Euclid Ave., Millwood, WA 99212  
TEL: 927-2222  
E-MAIL: ptantosyn@hotmail.com  
H P/WEB: www.teresaaartglass.com  
CONTACT: Teresa Peluso-Antosyn  
Art glass, photography, beaded jewelry, wood furnishings, paintings, pottery and collaged vintage items.

## ***Mobius Kids***

---

River Park Square – Lower Level, 808 W. Main, Suite 015, Spokane, WA 99201  
TEL: 624-KIDS (5437)  
FAX: 624-6453  
E-MAIL: info@mobiusspokane.org  
mgonzales@mobiusspokane.org  
WEBSITE: www.mobiusspokane.org  
CONTACT: Marty Gonzales, Associate Director  
HOURS: Monday-Saturday, 10:00am – 5:00 pm  
Sunday 11:00am – 5:00 pm

Mobius was formed by the merger of two local organizations, SciTech and the Children's Museum of Spokane, and is dedicated to two endeavors: Mobius Kids – The region's only hands-on, discovery children's museum houses exhibits, galleries, and space for special programs and camps and Mobius Science Center – A critically needed and citizen requested science and technology center to enhance educational opportunities for lifelong learners (to be located on the North bank of Riverfront Park).

## ***Mortimore Productions***

---

1520 W. Garland, Spokane, WA 99205  
TEL: 327-8384  
E-MAIL: info@mortimore.com  
WEBSITE: www.mortimore.com/#  
Specializing in HD commercials and videos, radio and sound design, media transferring, and celebrations and memorial videos.

## ***Music City Spokane***

---

1322 N. Monroe Street, Spokane, WA 99201  
TEL: 838-8312  
E-MAIL: musiccity@musiccitypianos.com  
WEBSITE: http://www.musiccitypianos.com/Welcome.html  
Music City Spokane is the Inland Northwest's family owned piano store for over 48 years specializing in pianos, organs, and keyboards. Lessons and piano tuning offered as well.

## ***Musicfest Northwest***

---

315 W. Mission, #18, Spokane, WA 99201-2325  
TEL: 327-3455  
FAX: 327-3455  
E-MAIL: musicfest@juno.com  
WEBSITE: www.musicfestnorthwest.org  
CONTACT: Gail Belanger, President  
Annual festival takes place in early May at Gonzaga University, includes adjudication and competition of over 1000 students in ballet, brass, flute, guitar, reed, piano, organ, string, and voice, 1st grade to post-graduate. Top winners perform with the Spokane Symphony orchestra. Stages two concerts a year: Young Artists, Festival Highlights.

## ***Nadiyah's***

---

The Warehouse Athletic Facility, 800 N. Hamilton, Spokane, WA 99202  
Mailing: P.O. Box 18393, Spokane, WA 99228  
TEL: 993-4423  
E-MAIL: nadiyahs@q.com  
nadiyah@spokanebellydance.com  
WEBSITE: www.spokanebellydance.com  
CONTACT: Nadiyah Vahdahty  
Nadiyah teaches Belly Dance at The Warehouse Athletic Facility in Spokane, WA.

## ***Nizana and Desert Silk Dance Company***

---

P.O. Box 756, Spokane, WA 99210  
TEL: 326-6622  
E-MAIL: nizana@att.net  
WEBSITE: http://NizanaRaqs.com  
CONTACT: Nizana el Rasan  
Nizana and Desert Silk Dance Company perform Middle Eastern influenced dance styles locally and regionally. Nizana also teaches workshops and classes in Spokane and Moses Lake and is a published author.

## ***Northwest Museum of Arts & Culture***

---

2316 W. 1st Ave., Spokane, WA 99201-5906  
TEL: 456-3931  
HOTLINE: 363-5315  
FAX: 363-5303  
E-MAIL: themac@northwestmuseum.org  
WEBSITE: www.northwestmuseum.org  
CONTACT: Ronald Rector, Executive Director, ronr@northwestmuseum.org  
Ben Mitchell, Senior Curator of Art, benm@northwestmuseum.org  
Library/Archive, 363-5342  
Art @ Work Gallery, 363-5317  
Ongoing and revolving American Indian, regional history; and visual arts exhibits.

## ***Northwest Glass Society***

---

11616 E. Montgomery Dr. Suite 50, Spokane Valley, WA 99206  
TEL: 893-1475  
E-MAIL: williamhagy@yahoo.com  
WEBSITE: www.northwestglassociety.org  
CONTACT: William Hagy  
Northwest Glass Society is nonprofit organization for the arts and education. Its mission is to better provide the community with a hands-on approach to glass as an artistic medium in a professional studio for students and glass artists alike. Northwest Glass Society's gallery displays a variety of works from local glass artists which are available for purchase.

## ***Northwest Papier Mâché Artists Guild***

---

P.O. Box 1151, Coeur d'Alene, ID 83816  
TEL: (208) 664-1691  
E-MAIL: [fineart@rheagiffin.com](mailto:fineart@rheagiffin.com)  
WEBSITE: [www.rheagiffin.com/nwpmag.htm](http://www.rheagiffin.com/nwpmag.htm)  
CONTACT: Rhea Giffin, Director

The Northwest Papier Mâché Artists Guild is comprised of extraordinary artists working with papier mâché as a fine art form. The group meets monthly in a central location to discuss upcoming shows, offer updates on individual's works in progress, and offer support and inspiration. Members of the Guild show their work individually and collectively and are always open to new venues to show their work.

## ***Pacific Flyway Art Gallery***

---

313 E. Sprague, Spokane, WA 99202  
TEL: 747-0812  
FAX: 459-0947  
E-MAIL: [pacificflyway@yahoo.com](mailto:pacificflyway@yahoo.com)  
WEBSITE: [www.pacificflywaygallery.com](http://www.pacificflywaygallery.com)  
CONTACT: Charles and Holly Swanson, Owners  
Wildlife, floral, landscapes, sporting and seasonal art.

## ***Pages of Harmony***

---

### **Male Barbershop Chorus and Quartets**

TEL: 994-3016  
E-MAIL: [chuckbari@aol.com](mailto:chuckbari@aol.com)  
WEBSITE: [www.pagesofharmony.org](http://www.pagesofharmony.org)  
CONTACT: Charles Brondos

Celebrating a capella music through barbershop singing since 1951. We can provide entertainment with either a quartet or a full chorus. The chorus meets every Wednesday night at 7pm, at the Southside Senior Activity Center, 3151 E. 27<sup>th</sup>, Spokane, WA.

## ***Petrucelly's Violins & Guitars***

---

1427 N. Monroe St., Spokane, WA 99201  
TEL: 455-5500  
FAX: 455-5502  
WEBSITE: [www.petrucellys.com.php5-3.websitetestlink.com/](http://www.petrucellys.com.php5-3.websitetestlink.com/)

The signature services of the shop are expert instrument repair, restoration, and insurance appraisals. All work is performed on-site, and can typically be done much, much faster (and with much higher quality) than other instrument shops. In addition to repair/restoration services, there is also a nice selection of sheet music.

## ***Polka Dot Pottery***

---

710 W. Main Ave. (River Park Square,), Spokane WA 99201  
118 S. Pines Rd., Spokane Valley, WA 99206  
2714 W. Northwest Blvd., Spokane WA 99205  
TEL: 624-2264 (River Park Square)  
327-5437 (W. Northwest Blvd.)  
924-2292 (S. Pines Rd.)  
E-MAIL: [info@polkadotpotttery.com](mailto:info@polkadotpotttery.com)  
WEBSITE: [www.polkadotpotttery.com](http://www.polkadotpotttery.com)  
CONTACT: Kimberly Geiger, Owner  
Customers paint their own pottery onsite and select from hundreds of hand-painted pottery pieces by owner Kimberly Geiger.

## ***PONY TALES Youth Services***

---

Northtown Mall, 4750 N. Division, Spokane, WA 99205  
TEL: 413-2061  
E-MAIL: [kitaramclure@gmail.com](mailto:kitaramclure@gmail.com)  
CONTACT: Kitara McClure, Executive Director  
PONY TALES Youth Services is a non profit in Spokane that reaches all demographics of youth. PONY TALES Youth Services' free teen's center in Spokane is located at Northtown Mall and offers free tutoring, Hip-Hop Classes, recording studio, workshops, job training, and community service projects. PONY TALES is an acronym for the organization's mission: Positive, Outreach, Navigating, Youth, Teaching, Adolescents, Leadership, & Entrepreneurial, Spirit.

## ***Pottery Place Plus***

---

### **(Cooperative of Potters & Craftspeople)**

Located in Aunties Bookstore, 203 N. Washington, Spokane, WA 99201  
TEL: 327-6920  
E-MAIL: [info@potteryplaceplus.com](mailto:info@potteryplaceplus.com)  
WEBSITE: [www.potteryplaceplus.com](http://www.potteryplaceplus.com)  
CONTACT: Linda Garratt, [jmgarratt@netzero.com](mailto:jmgarratt@netzero.com)  
Amy Warf, [awharf3@comcast.net](mailto:awharf3@comcast.net)

Potters and crafts people display hand crafted ceramics, metal, wood, glass, and fiber.

## ***Professional Musicians, AFM, Local 105***

---

1912 N. Division, Spokane, WA 99207  
TEL: 328-5253  
E-MAIL: [local105@afm.org](mailto:local105@afm.org)  
WEBSITE: [www.nwmusicians.org](http://www.nwmusicians.org)  
CONTACT: Tina Morrison, President

A community of musicians dedicated to providing the highest quality musical services for our region. The Professional Musicians has a free referral service to help you find just the right music and musicians for your special event. We have bands, chamber ensembles, soloists who perform a wide variety of musical styles for wedding ceremonies and receptions, private parties, anniversaries, conventions, or concerts. So if you're looking for high quality, live music for any occasion, call the Professional Musicians of the Inland Northwest, Local 105 of the American Federation of Musicians.

## ***Project Joy***

---

3151 E. 27th Avenue, Spokane WA 99223  
TEL: 535-0584  
FAX: 535-5203  
E-MAIL: [music@projectjoy.org](mailto:music@projectjoy.org)  
WEBSITE: [www.projectjoy.org](http://www.projectjoy.org)  
CONTACT: Robert G. Smick, Director  
Seniors entertaining seniors and other members of the community with a variety of arts activities. A Spokane Parks and Recreation program.

## ***Rawk Stewards Northwest, dba RSN Productions***

---

TEL: 998-9767  
EMAIL: rawkmandale@cs.com  
WEBSITE: www.rawkonline.com  
CONTACT: Dale Strom

Rawk Stewards Northwest is a 501 (c)(3) non-profit corporation founded in June 2010. It is primarily a concert production and promotion organization, featuring very contemporary forms of music. Rawk Stewards Northwest frequently conducts business as RSN Productions. It conducts events featuring both local bands and touring bands. RSN is a faith-based, independent and multi-denominational organization, and included both avowedly Christian and also market bands in its undertakings. It utilizes an inclusive model for building long-term relationships.

## ***Replay Music***

---

1927 W. Northwest Blvd., Spokane, WA 99205  
TEL: 458-6000  
E-MAIL: sales@replaymusic.com  
WEBSITE: www.replaymusic.com

Replay Music is a full line musical instrument store that has everything from Guitars and Amplifiers to Band and Orchestra Instruments, Drums, Keyboards, Cymbals, Ethnic Instruments, Hand/Latin Percussion, Sound Gear, Parts and Accessories, School Band & Orchestra instrument rentals, Service and Repairs, and much, much more.

## ***Rick Singer Photography***

---

W. 415-1/2 Main Avenue, Spokane, WA 99201  
TEL: 838-3333  
E-MAIL: rick@ricksingerphotography.com  
WEBSITE: www.ricksingerphotography.com  
CONTACT: Rick Singer

In 1981, Rick Singer completed the remodeling of the 1906 Durkin-Ulrich building, and opened his downtown natural light studio. His specialties are business portraits, passports, families, high school seniors, and children. Rick also does forensic, commercial, promotional, and restoration of old pictures. There is also a custom frame shop. In the summer visitors are welcome to tour the rooftop garden. Rick's studio is also an intimate small concert venue, attracting national acts.

## ***Rings & Things Wholesale***

---

304 E. 2nd Ave., Spokane, WA 99202  
Mailing Address: P.O. Box 450, Spokane, WA 99210  
TEL: 252-2900 or 1-800-366-2156  
FAX: 838-2602  
WEBSITE: www.rings-things.com  
CONTACT: Russ Nobbs

Rings & Things is a wholesale supplier of jewelry findings, beads, charms, Swarovski® Austrian crystal beads and prisms, display items, stringing supplies, chain, tools, glues and more. 300+ page wholesale catalog available. Website includes fully illustrated projects, stringing hints, and general information about beads, metals, platings, trade shows, bead society listings and more. Rings & Things has been supplying professional Crafters and Bead Stores with high quality jewelry supplies since 1972.

## ***River Ridge Association of Fine Arts***

---

TEL: 465-0369  
E-MAIL: cjann13@msn.com  
WEBSITE: www.spokanerraфа.com  
CONTACT: Connie Janney

The River Ridge Association of Fine Arts, originally formed in 1971, is now comprised of approximately 50 members. The artists vary in choice of medium, art background and art education but are actively creating, displaying their art, and winning awards. River Ridge Association of Fine Arts sponsors several member shows and an open show each year. We have several venues in which to show our art including, Olive It Café and Gallery on Crestline, Coffee Social on Indiana, and the Forza Coffee House on 29th St. We also are a part of the Treasures on Foxwood and plan many other shows for 2011. The group meets once a month on the 4<sup>th</sup> Wednesday, 10:30, at Spokane on Monroe and at Coffee Social on the 4<sup>th</sup> Thursday evening each month at 6:30.

## ***Rockin' B Ranch***

---

3912 N. Spokane Bridge Rd., Liberty Lake, WA 99019  
TEL: 891-9016  
888-rockinb (888-762-5462)  
E-MAIL: pamel@rockinbranch.com  
WEBSITE: www.rockinbranch.com  
CONTACT: Pamela Brownlee

Located 100 yards south of the Interstate 90's Exit 299, the Rockin' B Ranch presents the best Cowboy Supper Show in the Pacific Northwest with live music, comedy, fantastic food and lots of fun.

## ***Royal Fireworks Festival & Concert***

---

35 W. Main St., Ste. 245, Spokane, WA 99201  
TEL: 455-6865  
FAX: 455-6962  
E-MAIL: office@allegrobaroque.org  
WEBSITE: www.allegrobaroque.org  
CONTACT: David Dutton, Artistic Directors

Allegro's Royal Fireworks Festival and Concert takes place the last weekend of July. Set in 1749 England and staged in Riverfront Park, the festival offers period music, theatre and dance, visual arts, and historic fun for the whole family. Reaching thousands people each summer, the festival concludes with fireworks that are choreographed to Handel's Music for Royal Fireworks.

## ***Salem Lutheran Book Parlor***

---

1414 W. Broadway, Spokane, WA 99201  
TEL: 328-6527  
WEBSITE: www.thebookparlor.com

The Book Parlor is a non-profit, full service bookstore in the West Central Neighborhood of Spokane, Washington. A ministry of Salem Lutheran Church, The Book Parlor first opened its doors in March of 2001 and has been a warm and welcoming presence in the neighborhood ever since.

## ***Saranac Art Projects***

---

25 W. Main St., Spokane, WA 99201

TEL: 954-5458

WEBSITE: [www.saranacartprojects.org](http://www.saranacartprojects.org)

Saranac Art Projects is a not-for-profit exhibition space with a mission of supporting contemporary visual art and culture.

## ***Scripts and Scribes: Calligraphic Art Society***

---

1005 S. Homestead Spokane Valley, WA 99037

E-MAIL: [vickihallmark@prodigy.net](mailto:vickihallmark@prodigy.net) / [vicki.hall@amgreetings.com](mailto:vicki.hall@amgreetings.com)

CONTACT: Vicki Hall

Monthly meetings and workshops, public is welcome. The group promotes the study, practice, appreciation and excellence of calligraphy as an art form. Call for information.

## ***SculptureGallery.com***

---

Mailing Address: 1004 W. 23<sup>rd</sup> Avenue, Spokane, WA 99203

TEL: 838-1916  
(800) 573-4079

FAX: 290-6136

E-MAIL: [will@sculpturegallery.com](mailto:will@sculpturegallery.com)

WEBSITE: [www.sculpturegallery.com](http://www.sculpturegallery.com)

CONTACT: Will Murray, Owner

Over 700 selections of sculpture (online only).

## ***The Second Space***

---

610 W. 2<sup>nd</sup> Ave., Spokane, WA 99201

TEL: 847-3501

E-MAIL: [james@secondspacegallery.us](mailto:james@secondspacegallery.us)

WEBSITE: [www.secondspacegallery.us](http://www.secondspacegallery.us)

CONTACT: James Hill

The Second Space Gallery's mission is to invigorate and rejuvenate by promoting a varied cross-section of artistic expression. The display room is raw and urban while exuding warmth and genuine affection for our subjects.

## ***The Service Station***

---

9315 N. Nevada, Spokane, WA 99218

TEL: 466-1696

FAX: 466-1787

E-MAIL: [info@theservicestation.org](mailto:info@theservicestation.org)

WEBSITE: [www.theservicestation.org](http://www.theservicestation.org)

CONTACT: Scot Robinson

The Service Station is an 18,000-square foot complex that offers on-site event services to the community with rooms for rent. On the ground floor, a spacious 6500-square-foot auditorium holds up to 800 people as a state-of-the-art concert venue and is available for a variety of events.

## ***Shrinking Violet Society***

---

TEL: 939-0015

E-MAIL: [shrinkingvioletsociety@gmail.com](mailto:shrinkingvioletsociety@gmail.com)

WEBSITE: <http://www.shrinkingvioletsociety.com/>

The Shrinking Violet Society is a dynamic social co-op of fresh-minded individuals sustaining creative endeavors. They are dedicated to promoting localism, building intentional friendships, affirming sass and independence, nurturing artistic abundance, and circulating their passion.

## ***Silver Spurs International Folk Dancers***

---

1426 E. 19th Ave., Spokane, WA 99203

TEL: 533-9966

E-MAIL: [sdanko@cet.com](mailto:sdanko@cet.com)

WEBSITE: [www.silverspursyouthfolkdancers.org](http://www.silverspursyouthfolkdancers.org)

CONTACT: Susan Dankovich, Director

Vibrant folk dances from all over the world are performed by elementary through high school aged dancers. Instruction includes cultural education, dance and stage skills. Public, private, and community service performances welcome.

## ***Simply Dance Studio***

---

820 W. Sprague, Spokane, WA 99201

TEL: 892-1480

E-MAIL: [simplydance@simplydancestudio.com](mailto:simplydance@simplydancestudio.com)

WEBSITE: [www.simplydancestudio.com](http://www.simplydancestudio.com)

CONTACT: Marianna Seney

Simply Dance Studio is dedicated to fostering performing arts in Spokane. We offer Ballroom, Latin, Swing, Nia, Yoga, and Hip-Hop Aerobics. We also offer Saturday Night Salsa for \$5 per person, from 9:30pm-1am, with lessons prior at 8:15pm

## ***Six Bridges Arts Association***

---

4720 S. Progress Ct., Veradale, WA 99037

TEL: 939-1765

FAX: 921-5979

E-MAIL: [val@valpaknw.com](mailto:val@valpaknw.com)

[billme123@comcast.net](mailto:billme123@comcast.net)

WEBSITE: [www.spokanepigout.com](http://www.spokanepigout.com)

CONTACT: Val Workman, President

Bill Burke, Board Member

Six Bridges Arts Association presents free live entertainment/arts to the Spokane community.

## ***Smooth Jazz Society of the Inland Northwest***

---

P.O. Box 48204, Spokane, WA 99228

TEL: 340-3866

E-MAIL: [jazzbiz101@comcast.net](mailto:jazzbiz101@comcast.net)

[sjs@smoothjazzspokane.com](mailto:sjs@smoothjazzspokane.com)

WEBSITE: [www.smoothjazzspokane.com](http://www.smoothjazzspokane.com)

CONTACT: Dolores Gonzales, Executive Director, [dolores@smoothjazzspokane.com](mailto:dolores@smoothjazzspokane.com)

The mission of the Smooth Jazz Society of the Inland Northwest is to promote and educate the public regarding this outstanding yet often underexposed and underserved genre. We shall place an emphasis on providing support and a network of culturally diverse smooth jazz artists, building a multicultural music arts center, providing venues and opportunities that will showcase the seasoned and new smooth jazz artists, especially reaching out to the talent within our minority communities and our schools.

## ***The Society of Children's Book Writers and Illustrators (SCBWI)***

---

### **Inland Empire Region**

P.O. Box 30295 Spokane, WA 99223

TEL: 482-5288

E-MAIL: inlandnwsbwi@gmail.com

WEBSITE: www.scbwiwaid.org

CONTACT: Deborah Fredericks, Regional Advisor  
The Society of Children's Book Writers and Illustrators (SCBWI) is an international organization devoted to children's literature. SCBWI is for people at all stages in their careers. Our regional group covers Eastern Washington and North Idaho. Our quarterly mini-workshops offer practical training, support and advice. Our regional conference in the fall of each year also includes editorial and agent consultations.

### ***Sound Logic***

---

7305 E. Day Mt. Spokane Rd., Spokane, WA, 99201

TEL: 324-8009

E-MAIL: info@SoundLogicAudio.com

WEBSITE: http://www.soundlogicaudio.com

Creative Commercials, Original Music and Audio Production, Recording Studio, including Jingles, Jingle Production, Original Music Production, Voice Over's, Voiceover talent with ISDN, Sound Design, Original Scores and Audio Post Production for Radio, TV, Broadcast, Web, Film & Video.

### ***Spectrum Fine Art***

---

21 W. 34th Ave., Spokane, WA 99203

TEL: 747-5267

E-MAIL: kupua@comcast.net

WEBSITE: www.spectrum-art.com

CONTACT: Jim or Joanne Tatman

Original graphics, watercolors, mixed media and fiber from local, regional and international artists.

### ***Spirit of Spokane Chorus (a chapter of Sweet Adelines International)***

---

P.O. Box 14802 Spokane Valley, WA 99214

TEL: 684-6101

E-MAIL: info@spiritofspokanechorus.org

WEBSITE: www.spiritofspokanechorus.org

CONTACT: Renee King

The Spirit of Spokane Chorus of Sweet Adelines performs four part, a cappella harmony, in the barbershop style. We are a community-based chorus and always welcome visitors to our rehearsals. We invite women singers to become a part of our exciting journey. Please visit us any Tuesday evening at 6:45 pm at Opportunity Presbyterian Church (202 N. Pines Rd).

### ***Spokane All-City Jazz Ensembles***

---

Eastern Washington University, 119 Music Building, Cheney, WA 99004

TEL: 359-7073

FAX: 359-7028

E-MAIL: rtapper@ewu.edu

WEBSITE: www.spokaneallcityjazz.org

CONTACT: Rob Trapper, High School Ensembles  
Therese Covert, Executive Director

Spokane All-City Jazz Ensembles is a non-profit organization created to provide additional opportunities in a creative experience for middle school and high school instrumental students through jazz. The musical and leadership skills gained can be shared with the students' school music programs. Through ensembles, classes, private instruction, guest artists, master classes, and performances, students in the All-City Jazz Program have many opportunities to grow and learn. The high school program has a four concert season and the middle school program has a two concert season. Concerts include a guest artist concert and a holiday concert. The ensembles are constructed as small groups, allowing for a better staff/student ratio. This also helps students to gain more experience in improvising which builds confidence and strengthens their knowledge of music theory.

### ***Spokane Area Children's Chorus***

---

411 S. Washington St., Spokane, WA 99204

TEL: 624-7992

FAX: 624-8028

E-MAIL: chorus@SACCsings.org

WEBSITE: www.SACCsings.org

CONTACT: Kristina Ploeger, Artistic Director

Sarah Hopkins, Operations Manager

The Spokane Area Children's Chorus involves young singers, ages 7 - 18, from the greater Spokane area. The singers pursue musical excellence through weekly rehearsals that emphasize musicianship, vocal technique and performance skills.

### ***Spokane Area Square-dances***

---

3727 W. Heroy, Spokane, WA 99205

TEL: 328-5175

E-MAIL: r.amsbury@comcast.net

CONTACT: Claudia Amsbury

Spokane Area Council is the governing body for the eighteen square and round dance clubs in the Spokane area. It represents the Spokane area in the State Square and Round Dance Federation.

### ***Spokane Arts Commission***

---

6<sup>th</sup> Floor, City Hall

808 W. Spokane Falls Blvd., Spokane, WA 99201-3333

TEL: 625-6050

FAX: 625-6059

E-MAIL: arts@spokanecity.org

WEBSITE: www.spokanearts.org

CONTACT: Karen Mobley, Director

The Spokane Arts Commission is charged by City Ordinance with the purpose of promoting and enhancing the quality, accessibility, and presence of the arts in Spokane. Staffed by the City Arts Department, the Commission provides informational/promotional services and other assistance to artists, arts organizations, and the general public. Maintains the Chase Gallery at Spokane City Hall, presenting changing exhibits of work by local and regional artists, and other community related exhibits.

## ***Spokane Art Supply***

---

1303 N. Monroe Street, Spokane, WA 99201

TEL: 327-6628  
(800) 556-5568

FAX: 327-6629

E-MAIL: [customerservice@myartsupply.com](mailto:customerservice@myartsupply.com)

WEBSITE: [www.spokaneartsupply.com](http://www.spokaneartsupply.com)

CONTACT: Craig Marshal, Manager

Spokane Art Supply is a full service art store priding itself on having a full selection of materials for the fine-artist, weekend artist, crafter and hobbyist. Added to the mix of materials, they also have classes for artists of all ages and abilities.

## ***Spokane Authors and Self-Publishers***

---

P.O. Box 18573, Spokane, WA 99208-0573

TEL: 325-2072

E-MAIL: [daveeva@comcast.net](mailto:daveeva@comcast.net)

WEBSITE: [www.spokaneauthors.org](http://www.spokaneauthors.org)

CONTACT: David McChesney, President

With a membership of approximately 150, the group holds monthly programs to learn how to publish and market their own work. Meetings are held the first Thursday of the month, 11:30am, at Old Country Buffet on North Division in Spokane.

## ***Spokane British Brass Band***

---

P. O. Box 10783, Spokane, WA 99209

TEL: 466-5500

E-MAIL: [kitc@sbbb.org](mailto:kitc@sbbb.org)

WEBSITE: [www.sbbb.org](http://www.sbbb.org)

CONTACT: Kit Cutler, Band Manager

30-piece brass band in the British tradition putting on concerts for the Spokane area.

## ***Spokane Camera Club***

---

Mailing Address: 1004 W. 23rd Avenue, Spokane, WA 99203

TEL: 838-1916

FAX: 290-6136

E-MAIL: [will@murrayco.com](mailto:will@murrayco.com) (Will Murray, President)  
[dougoriard@comcast.net](mailto:dougoriard@comcast.net) (Doug Oriard, Webmaster)

WEBSITE: [www.spokanecameraclub.org](http://www.spokanecameraclub.org)

CONTACT: Will Murray, President

Membership Information: Paul DeRocker,  
[p.derocker@comcast.net](mailto:p.derocker@comcast.net)

Club Activities: Donna Larsen, 448-6910,

[donnalarsen@comcast.net](mailto:donnalarsen@comcast.net) or

David Sams, 466-5883, [dave@runway.net](mailto:dave@runway.net)

Marilyn Bashore, Arts Liaison Committee

The Mission of the Spokane Camera Club is: To stimulate the active enjoyment of photography by our members and the public. Organized in 1932, the club presents a year-around program of Field Trips, Seminars, Competitions, Education and Community Service. Monthly programs which present Prints and Digital Projection images are held in the new Spokane Falls Community College auditorium, Building # 24, Room 110.

## ***Spokane Carvers Association***

---

P. O. Box 9987, Spokane, WA 99209

TEL: 891-8001

E-MAIL: [spokanecarversinfo@hughes.net](mailto:spokanecarversinfo@hughes.net)

WEBSITE: [www.spokanecarvers.com](http://www.spokanecarvers.com)

CONTACT: Wally Kuchling

Spokane Carvers Association promotes the art of wood carving and sculpture. We have ongoing teaching classes at our twice a month meetings, every 1st & 3rd Saturday from 9:00 a.m.-12:00 noon at the Lidgerwood Presbyterian Church, 4449 N Nevada. We have an annual Juried Competition show and bring in the major suppliers of the craft on the first weekend of October and sponsor a Carving Rendezvous in June.

## ***Spokane Chamber Music Association***

---

### **(Spokane String Quartet)**

P. O. Box 3741, Spokane, WA 99220-3741

TEL: 998-2261

E-MAIL: [string.quartet@comcast.net](mailto:string.quartet@comcast.net)

WEBSITE: [www.spokanestringquartet.org](http://www.spokanestringquartet.org)

CONTACT: Garry Matlow, Marketing Development Director

The Spokane String Quartet was founded in 1979 to bring live, professional chamber music performances to Inland Northwest audiences. Now it is the only chamber ensemble to present a regular concert series including premieres by local composers and music from the Moldenhauer Archives. The Quartet's regular concert series takes place at the Bing Crosby Theater and Martin Woldson Theater at The Fox in downtown Spokane. The Quartet also presents free concerts at Spokane neighborhood centers, provides coaching for area student ensembles and performs at area secondary schools. They have represented Spokane performing throughout the northwest, in Carnegie Hall in New York, and on several tours of Europe. The Spokane Chamber Music Association is a non-profit organization whose mission is to support and promote the musical and educational activities of the Spokane String Quartet.

## ***Spokane Children's Theatre***

---

315 W. Mission, Suite 23, Spokane, WA 99201

TEL: 328-4886

Ticket Sales: 325-7328

E-MAIL: [sct@spokanechildrenstheatre.org](mailto:sct@spokanechildrenstheatre.org)

WEBSITE: [www.spokanechildrenstheatre.org](http://www.spokanechildrenstheatre.org)

CONTACT: Maria Caprile, Office Manager

The purpose of Spokane Children's Theatre is to provide suitable and educational theatrical entertainment for children and to promote cultivation of and participation in theatre arts. Spokane Children's Theatre presents a season of five plays for children and their families reaching an annual audience of more than 20,000 drawn from Eastern Washington and Northern Idaho. Each season we produce one show with school day performances for bused-in students. Every other season we sponsor a Regional Children's Theatre Play Festival. Each season we grant five scholarships to regional summer theatre camps.

## ***Spokane Civic Theater***

---

1020 N. Howard, Spokane, WA 99201

TEL: 325-1413

TICKETS: 325-2507

FAX: 325-9287

E-MAIL: [info@spokanecivictheatre.com](mailto:info@spokanecivictheatre.com)

WEBSITE: [www.spokanecivictheatre.com](http://www.spokanecivictheatre.com)

CONTACT: Yvonne A.K. Johnson, Executive Artistic Director, [yvonne@spokanecivictheatre.com](mailto:yvonne@spokanecivictheatre.com)

Incorporated in 1947, the Spokane Civic Theatre is one of the oldest community theatres in the country. Performances were staged first at the former Post Theater, then the Riverside Playhouse beginning in 1957, until the present facility opened in 1967. The mission of Spokane Civic Theatre is to foster and operate a volunteer live community theatre of high artistic merit.

## ***Spokane Falls Community College (SFCC)***

---

3410 W Fort George Wright Dr., Spokane, WA 99224

### **Fine Arts Department**

MS 3060

TEL: 533-3710

FAX: 533-3484

E-MAIL: [music@spokanefalls.edu](mailto:music@spokanefalls.edu)

WEBSITE: [www.spokanefalls.edu/Academic/FineArt/FineArtHome.aspx](http://www.spokanefalls.edu/Academic/FineArt/FineArtHome.aspx)

CONTACT: Paula Bresnahan, Department Secretary, [paulab@spokanefalls.edu](mailto:paulab@spokanefalls.edu)

### **Fine Arts Gallery**

Building 6

TEL: 533-3710

FAX: 533-3484

E-MAIL: [tomo@spokanefalls.edu](mailto:tomo@spokanefalls.edu)

WEBSITE: [www.spokanefalls.edu/Academic/FineArt/FineArtGallery.aspx](http://www.spokanefalls.edu/Academic/FineArt/FineArtGallery.aspx)

CONTACT: Tom O'Day, Gallery Director  
Contemporary and traditional works by students, regional, national and international artists.

### **Music Department**

TEL: 533-3720

FAX: 533-3528

E-MAIL: [music@spokanefalls.edu](mailto:music@spokanefalls.edu)

WEBSITE: [www.spokanefalls.edu/Academic/Music/Home.aspx](http://www.spokanefalls.edu/Academic/Music/Home.aspx)

CONTACT: Paula Bresnahan, Department Secretary, [paulab@spokanefalls.edu](mailto:paulab@spokanefalls.edu)

Concerts by students, faculty and guest artists. Student and community performing groups include: Spokane Falls Community Band, Spokane Falls Community Orchestra, Spokane Falls Community Jazz Ensemble, Spokane Falls Chamber Singers, Women's and Men's Ensembles, Jazz Combos and Commercial Music Groups.

### **Photography Department**

TEL: 533-3728

FAX: 533-4143

E-MAIL: [irag@spokanefalls.edu](mailto:irag@spokanefalls.edu)

WEBSITE: [www.spokanefalls.edu/TechProf/Photography/Home.aspx](http://www.spokanefalls.edu/TechProf/Photography/Home.aspx)

CONTACT: Ira Gardner, Program Director

Offering a 2-year AAS degree in Photography, teaching professional photographers as well as the community at large.

### **Drama Department**

MS 3050

TEL: 533-3592

FAX: 533-3651

E-MAIL: [billm@spokanefalls.edu](mailto:billm@spokanefalls.edu)

WEBSITE: [www.spokanefalls.edu/Academic/Drama/Home.aspx](http://www.spokanefalls.edu/Academic/Drama/Home.aspx)

CONTACT: Bill Marlowe, Director of Drama

College Drama Program, 4 major productions each year, 1-act Play Festival in June, classes in all areas of theatre/drama.

## ***Spokane Flute Center***

---

1310 W. Broadway Ave., A, Spokane, WA 99201

TEL: 768-0539

E-MAIL: [info@spokaneflutecenter.com](mailto:info@spokaneflutecenter.com)

WEBSITE: [www.spokaneflutecenter.com](http://www.spokaneflutecenter.com)

CONTACT: Justin Bahrami

The Spokane Flute Center aims to discover, foster, develop young flutists into avid music lovers and talented musicians.

## ***Spokane Folklore Society***

---

P. O. Box 141, Spokane, WA 99210-0141

TEL: 747-2640

E-MAIL: [copelandheller@msn.com](mailto:copelandheller@msn.com)

WEBSITE: [www.spokanefolklore.org](http://www.spokanefolklore.org)

CONTACT: Margie Heller

The purposes of the Spokane Folklore Society shall be to promote a broader community awareness and involvement of our cultural and folk traditions, such as music, dance and other folk arts through concerts, dances, festivals, workshops, lectures, demonstrations and newsletters.

## ***Spokane GLBT Film Festival***

---

P.O. Box 2931, Spokane, WA 99220-2931

TEL: 216-0366

E-MAIL: [spokanefilmfest@comcast.net](mailto:spokanefilmfest@comcast.net)

WEBSITE: [www.spokanefilmfest.org](http://www.spokanefilmfest.org)

CONTACT: Barb Lee, Festival Programmer

A non-profit organization dedicated to presenting a realistic and positive depiction of the gay/lesbian community and its concerns. Spokane GLBT Film Festival strives to present films by independent film makers and films not likely seen anywhere else in the community.

## ***Spokane Handbells***

---

4512 E. Sumac, Spokane, WA 99223-2205

TEL: 448-1309

E-MAIL: [kendianewilliams@juno.com](mailto:kendianewilliams@juno.com)

CONTACT: Diane Williams, Director

Handbell Choir(s) available for demonstrations and concerts. Children and adult choirs.

## ***Spokane Handweavers' Guild***

---

P. O. Box 20093, Spokane, WA 99204

TEL: 534-8716

E-MAIL: [admin@spokaneweavers.org](mailto:admin@spokaneweavers.org)

WEBSITE: [www.spokaneweavers.org](http://www.spokaneweavers.org)

CONTACT: Judy Olsen

Meets 2nd Tuesday of each month, from September until June, at 6:00 p.m. Meeting place is at Orchard Crest Retirement Community, call for information, visitors welcome.

## ***Spokane Highland Games Association***

---

P. O. Box 4012, Spokane, WA 99220

TEL: 922-3661 or 270-7624

E-MAIL: [spokanehighlandgames@yahoo.com](mailto:spokanehighlandgames@yahoo.com)

WEBSITE: [www.spokanehighlandgames.org](http://www.spokanehighlandgames.org)

CONTACT: Peter Guthrie, Chair, [lguthrie@icehouse.net](mailto:lguthrie@icehouse.net)  
Andrea Severns, Publicity Chair,  
[spokanescotspr@q.com](mailto:spokanescotspr@q.com)

Organized by the Spokane Highland Games Association, a 501(c)(3) non profit organization, the Spokane Highland Games is a great way for the whole family to partake in the fun and excitement of this unique and colorful Scottish event, without having to travel to Scotland. The Spokane Highland Games take place annually in early August.

## ***Spokane International Film Festival (SpIFF)***

---

1519 W. 13th Ave., Spokane, WA 99204

TEL: 720-SpIF (7743)

(888) 411-SpIF (7743)

E-MAIL: [SpIFF@spokanefilmfestival.org](mailto:SpIFF@spokanefilmfestival.org)

WEBSITE: [www.spokanefilmfestival.org](http://www.spokanefilmfestival.org)

SpIFF brings the best features, documentaries, and shorts from around the world to enrich the lives of those who call the Inland Northwest home. SpIFF enhances diversity through cultural awareness and offers a forum where audiences and filmmakers can engage in dialogue about the art of cinema. Come and see what the world is watching! Overseen by Contemporary Arts Alliance.

## ***Spokane Is Reading***

---

TEL: 893-8205

444-5307

E-MAIL: [esilverstone@spokanelibrary.org](mailto:esilverstone@spokanelibrary.org)

WEBSITE: [www.spokaneisreading.org](http://www.spokaneisreading.org)

CONTACT: Bethany Luke-Hutson, Spokane County Library District

Eva Silverstone, Spokane Public Library

Spokane Is Reading is a joint community read sponsored and produced by Spokane Public Library, Spokane County Library District and Auntie's Bookstore. Designed to encourage reading in the region, culminating with two free author presentations, Spokane Is Reading is one of the longest-running community reads in the state of Washington, and has celebrated such authors as Sherman Alexie, Jess Walter, Laurie R. King and Kent Haruf, to name a few.

## ***Spokane Jazz Orchestra***

---

P.O. Box 174, Spokane, WA 99210-0174

TEL: 435-1007 or 324-8828

FAX: 777-3739

E-MAIL: [tamolter@msn.com](mailto:tamolter@msn.com)

WEBSITE: [www.spokanejazz.org](http://www.spokanejazz.org)

CONTACT: Tom Molter, Music Director

Melinda Keberle, Spokane Jazz Society President

The Spokane Jazz Orchestra is the Nation's oldest, continually performing, professional community-supported 17 piece big band. For over 30 years, the "SJO" has been the flagship ensemble of Spokane Jazz Society, bringing both performances and education services to the Inland Northwest. Exciting guest artists headline each of the four annual concerts and bring out the best in the top professional musicians who create the "swinging sound" of America's original art form- JAZZ!

## ***Spokane Jazz Society***

---

P.O. Box 174, Spokane, WA 99210-0174

TEL: 838-2671

E-MAIL: [tamolter@msn.com](mailto:tamolter@msn.com)

WEBSITE: [www.spokanejazz.org](http://www.spokanejazz.org)

CONTACT: Tom Molter, Music Director

Spokane Jazz Society and the Spokane Jazz Orchestra were formed and incorporated as a non-profit arts organization in 1975. The Inland Northwest continues to take ever-greater pride and pleasure in what has become one of its genuine performing arts treasures. Twenty-five years of sweat, commitment, support, volunteerism and literally scores of glorious performances tell the story of SJS and the SJO. Spokane Jazz Orchestra's guest artist roster reads like a "Who's Who" in jazz. *Your* Spokane Jazz Orchestra is the oldest, continually performing, professional community jazz orchestra in the western hemisphere!

## ***Spokane Jeweller's Guild***

---

P.O. Box 2051, Valleyford WA 99036

TEL: 448-7641

E-MAIL: [info@spokanejewelersguild.org](mailto:info@spokanejewelersguild.org)

WEBSITE: [www.spokanejewelersguild.org](http://www.spokanejewelersguild.org)

CONTACT: Jon Lepper, [jon@jonlepper.com](mailto:jon@jonlepper.com)

Spokane Jewellers Guild serves as a nonprofit educational association for the use and benefit of its members. The association will promote the knowledge and growth of its members in the art of fine craftsmanship, and techniques in silver, gold and metalsmithing through workshops, demonstrations, lectures, programs and meetings.

## ***Spokane Lilac Festival Association***

---

3021 S. Regal, Suite 105, Spokane, WA 99223-4702

TEL: 535-4554

FAX: 535-4664

E-MAIL: [office@spokanelilacfestival.org](mailto:office@spokanelilacfestival.org)

WEBSITE: [www.spokanelilacfestival.org](http://www.spokanelilacfestival.org)

The Spokane Lilac Festival Association is a non-profit 501(c)(3) organization whose mission is to honor our military, nurture our youth, and promote the Spokane region through ambassador outreach. The Spokane Lilac Festival also hosts the largest Armed Forces Torchlight Parade in the Nation (third Saturday in May), celebrating over 70 years of tradition. For more information visit [www.spokanelilacfestival.org](http://www.spokanelilacfestival.org).

## ***Spokane Masonic Center***

---

1108 W. Riverside Ave., Spokane, WA 99201  
TEL: 624-2728  
FAX: 624-0368  
E-MAIL: info@spomc.org  
WEBSITE: www.spomc.org  
CONTACT: Sonja Duffy, Event Coordinator, coordinator@spomc.org

Nestled in the heart of Spokane's Downtown Historic District, the Spokane Masonic Center is a turn of the century; five floor 100,000 square foot building. The Spokane Masonic Center is on the National, State and City Historic Registries as one of the major structures in Spokane. With many elegant spaces for your memorable event, the Center has the capacity to host numerous isolated concurrent events.

## ***Spokane Music Teachers Association***

---

3910 W Custer Dr, Spokane WA  
TEL: (208) 664-0910  
E-MAIL: h4d2@verizon.net  
WEBSITE: www.spokanemusicteachers.org  
CONTACT: Colleen Hunter, President

Spokane Music Teachers Association is a professional teaching organization affiliated with Washington State Music Teachers Association and Music Teachers National Association. Sponsor monthly lecture meetings for members from September-May, as well as a yearly workshop featuring nationally recognized teachers & State Adjudications for students.

## ***Spokane Opera***

---

P.O. Box 8558, Spokane, WA 99203  
TEL: 533-1150  
FAX: 534-0664, attn: Bill Graham  
E-MAIL: spokaneopera@spokaneopera.org or  
billgraham@spokaneopera.org  
WEBSITE: www.spokaneopera.org  
CONTACT: Bill Graham, Executive Director  
Marjory Halvorson, Artistic Director

A professional, non-profit opera organization producing fully staged productions in a broad range of classical and modern form. Spokane Opera's mission is to utilize and promote regional resources and talent to the greatest extent possible; increase the experience of young professional singers in the operatic arts; to generate a better understanding and appreciation of the history, performance and beauty of opera through a variety of educational and outreach activities.

## ***Spokane Porcelain Artists***

---

5031 S. Morrill Lane, Spokane, WA 99223-1553  
TEL: 448-1078  
E-MAIL: pjb@mymailstation.com  
CONTACT: Phyllis J. Brooks, Fine Arts Chairman  
A non-profit porcelain painters group, with about 60 members who participate in volunteer demos, teaching through community colleges, and an annual show. Spokane Porcelain Artists belongs to State and World organizations. Donations of our work also go to other non-profit organizations for fund raising.

## ***Spokane Potters Guild***

---

1404 N. Fiske, Spokane, WA 99202-3672  
TEL: 532-8225  
WEBSITE: angelfire.com/wa2.spg  
CONTACT: JoDee Moody, President  
The Spokane Potters Guild promotes general knowledge of the ceramic arts by contributing to the artistic, educational and cultural awareness of the community. Provides a supportive organization and facility for non-productive ceramic artists of all skill levels and a place where they can network with each other in order to broaden skills and to share knowledge and techniques through classes, special events and exhibits.

## ***Spokane Preservation Advocates (SPA)***

---

P.O. Box 785, Spokane, WA 99210  
TEL: 344-1065  
E-MAIL: kathie@spokanepreservation.org  
WEBSITE: www.spokanepreservation.org  
CONTACT: Kathie Bonner Walsh, Executive Director,  
Spokane Preservation Advocates (SPA) was formed in 1997 by a group of local historic preservation advocates, who believed in the value of preservation and its role in enhancing Spokane's quality of life. These preservation pioneers saw the need for a new preservation organization in Spokane to supplement the work of existing preservation-related groups while also providing a strong advocacy voice for preservation issues. SPA's fundamental goal is to maintain and improve Spokane's historic character by preserving our heritage and pursuing outstanding, compatible new development.

## ***Spokane Public Library Gallery***

---

906 W. Main, First Floor, Spokane, WA  
TEL: 444-5334  
E-MAIL: screed@spokanelibrary.org  
WEBSITE: www.spokanelibrary.org  
CONTACT: Susan Creed

## ***Spokane Public Radio (see KPBX & KSFC & KPZ)***

---

## ***Spokane Storytelling League***

---

P. O. Box 28161, Spokane, WA 99228  
TEL: 466-8672  
E-MAIL: kkyates@cet.com  
CONTACT: Kay Yates  
A non-profit service organization dedicated to the perpetuation of the fine art of storytelling. Offers support, learning skills & opportunities to those interested in storytelling. Meetings are held the second Tuesday of each month September through June for those who would like to learn more about and perfect their storytelling techniques. Gladly shares tales with the community for a variety of events for all ages.

## ***Spokane String Quartet***

---

(see Spokane Chamber Music Association)

P. O. Box 3741, Spokane, WA 99220-3741

TEL: 998-2261

E-MAIL: [string.quartet@comcast.net](mailto:string.quartet@comcast.net)

WEBSITE: [www.spokanestringquartet.org](http://www.spokanestringquartet.org)

CONTACT: Garry Matlow, Marketing Development Director

The Spokane String Quartet was founded in 1979 to bring live, professional chamber music performances to Inland Northwest audiences. Now it is the only chamber ensemble to present a regular concert series including premieres by local composers and music from the Moldenhauer Archives. The Quartet's regular concert series takes place at the Bing Crosby Theater and Martin Woldson Theater at The Fox in downtown Spokane. The Quartet also presents free concerts at Spokane neighborhood centers, provides coaching for area student ensembles and performs at area secondary schools. They have represented Spokane performing throughout the northwest, in Carnegie Hall in New York, and on several tours of Europe. The Spokane Chamber Music Association is a non-profit organization whose mission is to support and promote the musical and educational activities of the Spokane String Quartet.

## ***Spokane Symphony***

---

818 W. Riverside, Suite 100, Spokane, WA 99201

Mailing Address: P.O. Box 365, Spokane, WA 99210-0365

TEL: 326-3136

624-1200 (Tickets)

FAX: 326-3921

E-MAIL: [symphonymarketing@spokanesymphony.org](mailto:symphonymarketing@spokanesymphony.org)

WEBSITE: [www.spokanesymphony.org](http://www.spokanesymphony.org)

CONTACT: Annie Matlow, Marketing & Public Relations Director  
Jason Miller, Development Director  
Brenda Nienhouse, Executive Director  
Don Nelson, General Manager

The Spokane Symphony Orchestra is committed to providing performances of the symphonic and chamber orchestra repertoire and to promoting educational and cultural activities which will enhance the knowledge and appreciation of that music to people of all ages in Spokane and the Inland Northwest. The Symphony provides more than 50 professional performances each season of the highest quality possible within a sound economic framework.

## ***Spokane Symphony Chorale***

---

818 W. Riverside, Suite 100, Spokane, WA 99201

Mailing Address: P.O. Box 365, Spokane, WA 99210-0365

TEL: 465-9323

E-MAIL: [secretary@spokanesymphonychorale.org](mailto:secretary@spokanesymphonychorale.org)

WEBSITE: [www.spokanesymphonychorale.org](http://www.spokanesymphonychorale.org)

CONTACT: Dr. Julián Gómez, Chorale Director, [julian.gomez@ewu.edu](mailto:julian.gomez@ewu.edu)

Harold Young, Secretary, [heyoun@juno.com](mailto:heyoun@juno.com)

The Spokane Symphony Chorale was established in 1955 as a volunteer organization and, since 1978, has been an official entity of the Spokane Symphony. Led by Director Dr. Julián

Gómez Giraldo, the Chorale enjoys a dedicated volunteer base of more than 80 singers from the Spokane area; including many who commute from Coeur d'Alene, Davenport, Sandpoint, Pullman and many other locations to participate in the over 100 hours of volunteer rehearsal and performance time required for each concert season.

## ***Spokane Valley Arts Council***

---

9507 E. Sprague, Spokane Valley, WA 99206

TEL: 924-4994

E-MAIL: [info@spokanevalleyarts.org](mailto:info@spokanevalleyarts.org)

WEBSITE: [www.spokanevalleyarts.org](http://www.spokanevalleyarts.org)

CONTACT: Dean Cameron, 995-9958,  
[americanfineart@aol.com](mailto:americanfineart@aol.com)

Mission Statement: To promote, support and enhance the diversity, quality and accessibility of arts and culture in Spokane Valley.

## ***Spokane Valley Heritage Museum***

---

12114 E. Sprague Ave., Spokane Valley, WA 99214

Mailing Address: P.O. Box 141341, Spokane Valley, WA 99214

TEL: 922-4570

E-MAIL: [spokanevalleymuseum@gmail.com](mailto:spokanevalleymuseum@gmail.com)

WEBSITE: [www.valleyheritagecenter.org](http://www.valleyheritagecenter.org)

CONTACT: Jayne Singleton

Mission: To collect, preserve and exhibit the Spokane Valley history and culture for the benefit of the community.

## ***Spokane Youth Ballet***

---

TEL: 922-3023

E-MAIL: [soupho@hotmail.com](mailto:soupho@hotmail.com)

WEBSITE: [www.spokaneyouthballet.com](http://www.spokaneyouthballet.com)

CONTACT: Makayla Hamilton, Secretary/Treasurer  
Spokane Youth Ballet's goal is to produce a professional quality performance in Spokane.

## ***Spokane Youth Symphony***

---

P.O. Box 9547, Spokane, WA 99209-9547

TEL: 448-4446

FAX: 456-4948

E-MAIL: [info@spokaneyouthsymphony.org](mailto:info@spokaneyouthsymphony.org)

WEBSITE: [www.spokaneyouthsymphony.org](http://www.spokaneyouthsymphony.org)

CONTACT: David Hollingshead, Executive Director  
Julián Gómez Giraldo, Artistic Director

The Spokane Youth Symphony provides youth an opportunity to develop their musical abilities in the field of orchestral performance. Our four orchestras offer training and performance for young musicians from ages 7 to 21 with placement by audition. Our musicians are offered a progressive course of study to improve skills and nurture an early, budding love of music.

## ***Steinway Piano Gallery of Spokane***

---

13418 E Nora Avenue, Spokane, WA 99216

TEL: 32-PIANO (327-4266)

E-MAIL: [info@steinwayspokane.com](mailto:info@steinwayspokane.com)

WEBSITE: [www.steinwayspokane.com](http://www.steinwayspokane.com)

CONTACT: Kevin and Jami Rindlisbacher

Authorized Steinway Dealer For Spokane, Tri-Cities, Central Washington, Montana, Northern Idaho.

## ***Theater Arts for Children***

---

10814 E. Broadway Avenue, Spokane Valley, WA 99206  
Mailing Address: P. O. Box 141926, Spokane, WA 99214  
TEL: 892-5413  
E-Mail: email@theaterartsforchildren.org  
WEBSITE: www.theaterartsforchildren.org  
CONTACT: Ken Boles

Theater Arts for Children is a non-profit 501(C)(3) theater established to provide an opportunity for children of all ages to participate in theater arts in order to gain the many benefits this enriching experience brings. We want to give everyone the chance to experience live theater as actors, crew hands and as audience participants. We encourage Directors to cast children and adults new to the theater and new to our theater to work along side seasoned actors. The mission of Theater Arts for Children is to make a "Dramatic Impact in Children's Lives."

## ***Theatre Ballet of Spokane***

---

416 W. Sprague Ave., Spokane, WA 99201  
TEL: 838-5705  
FAX: 838-3016  
E-MAIL: Daskegard@yahoo.com  
WEBSITE: www.theatreballet.org  
CONTACT: Dodie Askegard, Artistic Director

Theatre Ballet of Spokane serves the general public by offering dance concerts, lectures, demonstrations and performs in collaboration with Allegro Baroque and Beyond, Spokane Symphony and Spokane Children's Theatre. Guest artists and guest choreographers are invited to work with this civic dance company. Theatre Ballet of Spokane also presents "Ballet & Bubbly" each New Year's Eve at the Bing Crosby Theater.

## ***Thin Air Community Radio***

---

**(aka KYRS 92.3 FM / 89.9 FM)**

35 W. Main, Suite 340, Spokane, WA 99201  
TEL: 747-3012  
E-MAIL: info@kyrs.org  
WEBSITE: www.kyrs.org  
CONTACT: Lupito Flores, Station Manager, lupito@kyrs.org  
Thin Air Radio is a low power (100 watt) community radio station. It is a non-profit, non-commercial FM station run by volunteers, providing a wide variety of programming to diverse communities and underserved groups.

## ***Think SWING! Productions***

---

604 E Montgomery Ave Spokane, WA 99207  
TEL: 998-7570 or 443-5412  
CONTACT: Garrin Hertel  
Think SWING! Jazz and Blues Festival, features music of many varieties, united by the thing that means everything: SWING! It is our sincere goal to encourage the Spokane community and beyond by offering the best in local, regional, national, and international jazz and blues artists in the grandest, historical venues of Spokane, Washington.

## ***TicketsWest***

---

201 W. North River Drive, Suite 100, Spokane, WA 99201  
TEL: 800-325-SEAT (7328)  
E-MAIL: info@ticketswest.com  
clark.moss@ticketswest.com  
WEBSITE: www.ticketswest.com  
CONTACT: Clark Moss, Regional Manager  
TicketsWest provides event ticket distribution services and promotes and presents a variety of entertainment events.

## ***Tinman Gallery***

---

811 W. Garland, Spokane, WA 99205  
TEL: 325-1500  
FAX: 325-2306  
E-MAIL: tinmanartworks@yahoo.com  
WEBSITE: www.tinmanartworks.com  
CONTACT: Susan C. Bradley, Owner  
Fine art gallery and bookshop with art by local and regional artists.

## ***Tinman Too***

---

809 West Garland Ave., Spokane, WA 99205  
TEL: 325-3001  
FAX: 325-2306  
EMAIL: tinmanartworks@yahoo.com  
WEBSITE: tinmantoo.com  
CONTACT: Susan Bradley, Owner  
Children's bookstore with changing exhibits of local and regional artists.

## ***Top Flite A Cappella Quartet***

---

5209 N. Mulvaney Ct., Spokane Valley, WA 99212  
TEL: 535-2703  
E-MAIL: cmoyer@cet.com  
CONTACT: Chris Moyer  
Top Flite (Chris Moyer, Jaye Nordling, Rick Richard and Shawn Wright) is a vocal a cappella quartet formed in 1991. Originally a barbershop quartet, the group has evolved its repertoire to consist of a variety of styles, including; 50's/60's rock 'n roll, big band jazz, holiday favorites, and modern popular music.

## ***Trackside Studio***

---

115 S. Adams Street, Spokane, WA 99204  
TEL: 863-9904  
E-MAIL: trackside@tracksidestudio.net  
WEBSITE: www.tracksidestudio.net  
CONTACT: Chris Kelsey  
Contemporary ceramics art gallery and studio.

## ***29th Avenue Artworks***

---

3128 E. 29th Ave., Spokane, WA 99223  
TEL: 534-7959  
E-MAIL: shelart2u@netzero.com  
CONTACT: Deborah & Jason Sheldon, Owners  
Local contemporary exhibitions.

## ***Washington State Quilters, Spokane Chapter***

---

P.O. Box 7117, Spokane, WA 99207

TEL: 435-3889

E-MAIL: [cabinfeverquilter@dishmail.net](mailto:cabinfeverquilter@dishmail.net)

WEBSITE: [www.wsqsokane.org](http://www.wsqsokane.org)

CONTACT: Karen Liguori, Public Relations

The Washington State Quilters - Spokane Chapter, is a non-profit organization that promotes and enhances the art of quilting. We sponsor a Quilt Show in Spokane in October, featuring over 500 quilts, a merchant mall and quilting related demonstrations. We also have quarterly meetings with nationally known speakers and quarterly Quilting Bees.

## ***WestCoast Entertainment***

---

W. 201 North River Drive Suite 200, Spokane, WA 99201

TEL: 777-6312

E-MAIL: [jack.lucas@ticketwest.com](mailto:jack.lucas@ticketwest.com)

[lerria.schuh@ticketwest.com](mailto:lerria.schuh@ticketwest.com)

WEBSITE: [www.bestofbroadwayspokane.com](http://www.bestofbroadwayspokane.com)

CONTACT: Jack G. Lucas, President

Lerria A. Schuh, Director of Marketing

For over 20 years, WestCoast Entertainment has presented national touring Broadway musicals as part of The Best of Broadway Series at the INB Performing Arts Center in Spokane. Over 1.5 million patrons have attended WestCoast Entertainment productions including "The Phantom of the Opera," "Disney's The Lion King," "Les Misérables," "Cats," "Miss Saigon," and many more. Annual seasons extend September – May, and typically include 4 – 8 productions per year. For information on this year's season, visit [www.bestofbroadwayspokane.com](http://www.bestofbroadwayspokane.com).

## ***Whitworth University***

---

300 W. Hawthorne Rd., Spokane, WA 99251

TEL: 777-1000

WEBSITE: [www.whitworth.edu](http://www.whitworth.edu)

### **Art Department**

TEL: 777-3258

FAX: 777-3781

E-MAIL: [dchristiansen@whitworth.edu](mailto:dchristiansen@whitworth.edu)

WEBSITE: [www.whitworth.edu/art](http://www.whitworth.edu/art)

CONTACT: Dee Anna Christiansen, Program Assistant

Professionally active faculty members whose works have won awards at exhibits and juried competitions throughout the nation encourage students to participate in art to enhance their life experience, to develop skills and concepts through theory and practice, and to immerse themselves intellectually and spiritually in the creative process. Visit the Whitworth Art Department website above to learn about current and upcoming exhibits and view online galleries of student and faculty art work.

### **Cowles Student Gallery**

TEL: 777-3258

FAX: 777-3781

E-MAIL: [srue@whitworth.edu](mailto:srue@whitworth.edu)

[dchristiansen@whitworth.edu](mailto:dchristiansen@whitworth.edu)

WEBSITE: [www.whitworth.edu/art](http://www.whitworth.edu/art)

CONTACT: Stephen Rue, Gallery Director

Dee Anna Christiansen, Program Assistant

Rotating exhibits by regional and national artists in various media, as well as work by faculty and students

### **Bryan Oliver Gallery**

TEL: 777-3258

FAX: 777-3781

E-MAIL: [srue@whitworth.edu](mailto:srue@whitworth.edu)

[dchristiansen@whitworth.edu](mailto:dchristiansen@whitworth.edu)

WEBSITE: [www.whitworth.edu/art](http://www.whitworth.edu/art)

CONTACT: Stephen Rue, Gallery Director

Dee Anna Christiansen, Program Assistant

Each academic year, Whitworth's Bryan Oliver Gallery exhibits works by local, regional, national and international artists. Gallery admission is free. Visit the Whitworth Art Department website to learn about current and upcoming exhibits and view online galleries of student and faculty art work.

### **English Department**

TEL: 777-3253

FAX: 777-4682

E-MAIL: [lrodrigues@whitworth.edu](mailto:lrodrigues@whitworth.edu)

WEBSITE: [www.whitworth.edu/english](http://www.whitworth.edu/english)

CONTACT: Lisa Sem-Rodrigues, Program Assistant

Writing and reading skills are most vital when they intersect our own personal histories. The English faculty and students, together focus on achieving professional level writing skills; close reading, analysis and research; as well as preparation for graduate study in the humanities and life in the professional world.

### **Music Department**

TEL: 777-3280

FAX: 777-3739

E-MAIL: [jlack@whitworth.edu](mailto:jlack@whitworth.edu)

WEBSITE: [www.whitworth.edu/music](http://www.whitworth.edu/music)

CONTACT: Joan Lack, Program Assistant

With its high-achieving choir, wind symphony, jazz ensemble and piano studies leading the way, the Whitworth Music Department offers myriad opportunities for its singers and instrumentalists to perform and compete. Whitworth's musicians have excelled at Spokane's Allied Arts Festival, at the Lionel Hampton Jazz Festival, and on tours throughout the region, the nation, and the world. The college's acoustically rich recital hall hosts a regular schedule of performances. Visiting musicians also perform and conduct master classes throughout the school year. Visit the Whitworth music website above to learn about upcoming concerts.

## ***Whitworth University***

---

### **Theatre Department**

TEL: 777-3707

FAX: 777-4592

E-MAIL: [jtoulouse-lee@whitworth.edu](mailto:jtoulouse-lee@whitworth.edu)

WEBSITE: [www.whitworth.edu/theatre](http://www.whitworth.edu/theatre)

CONTACT: Jennifer Toulouse-Lee, Program Assistant

Whitworth Theatre offers students the chance to know themselves better by reaching beyond personal experience to portray characters from all walks of life. Students are encouraged to learn theory and to develop performance skills at the same time – from stagecraft to character, from classroom to packed house. Whitworth’s talented theatre faculty stimulate creativity and discipline through beginning and advanced acting, dance, improvisation, mime, performance theory and practice, directing, theatre history, voice and movement; a parallel emphasis on stagecraft ensures that staging, lighting and makeup all play “speaking parts” in each production. The department features two annual main-stage productions, the Festival of One-Acts, touring theatre performances, solo theatre, a musical every other year (in collaboration with the music department), and performances in the Speakers and Artists Program, chapel services, and Core classes.

## ***William Grant Gallery & Framing***

---

820 W. Francis, Spokane, WA 99205

TEL: 484-3535

CONTACT: Charlie Hinton, Owner

Bi-monthly exhibits featuring local artists.

## ***Willow Springs Books***

---

501 N Riverpoint Blvd, Ste 425, Spokane, WA 99202

TEL: 359-7435

E-MAIL: [willowspringsbooks@gmail.com](mailto:willowspringsbooks@gmail.com)

WEBSITE: <http://willowsprings.ewu.edu>

## ***Willow Springs Magazine***

---

501 N Riverpoint Blvd, Ste 425, Spokane, WA 99202

TEL: 359-7435

E-MAIL: [willowspringsewu@gmail.com](mailto:willowspringsewu@gmail.com)

WEBSITE: [willowsprings.ewu.edu](http://willowsprings.ewu.edu) (no www)

Willow Springs is published twice a year by students of the Inland Northwest Center for Writers at Eastern Washington University. It is edited by Sam Ligon. Willow Springs offers the Willow Springs Fiction Prize annually for a short story. We publish poetry, fiction, interviews, and literary nonfiction and are known as an outlet for up-and-coming writers. In 2000 we were named Washington’s Best Literary Journal by Clockwatch Review. Past issues have featured work by Tobias Wolff, Jorge Luis Borges, WS Merwin, Robert Olmstead, and Thomas Lux as well as interviews with Rick Bass and Melanie Rae Thon. The magazine also hosts an annual chapbook series and contests for new poets and fiction writers.

## ***Without Borders: A Contemporary Fiber Art Group***

---

432 Shoshone Pl., Spokane, WA 99203

TEL: 624-1749

CONTACT: Becky Abell

Formed in 1995, this diverse group of Spokane area fiber artists developed out of a collective desire to produce, promote and exhibit contemporary textile arts.

# WASHINGTON STATE RESOURCES

---

## ***4Culture***

---

101 Prefontaine Place South, Seattle, WA 98104  
TEL: (206) 296-7580  
FAX: (206) 296-8629  
E-MAIL: [info@4culture.org](mailto:info@4culture.org)  
WEBSITE: [www.4culture.org](http://www.4culture.org)  
Formerly Cultural Development Authority of King County, 4Culture advances community through arts, heritage, preservation and public art. 4Culture advocates for the fundamental value of culture to every person.

## ***Humanities Washington***

---

1204 Minor Ave, Seattle, WA 98101  
TEL: (206) 682-1770  
FAX: (206) 682-4158  
E-MAIL: [info@humanities.org](mailto:info@humanities.org)  
WEBSITE: [www.humanities.org](http://www.humanities.org)  
CONTACT: Chris Thompson, Development and Communications Manager  
Humanities Washington, formerly known as Washington Commission for the Humanities, is a statewide organization dedicated to the humanities. We are a resource for other non-profit organizations, scholars, parents, writers, teachers, students, documentary filmmakers, journalists and other groups and individuals across the state. We are dedicated to providing humanities programs that nurture creativity, promote dialogue and spark critical thinking.

## ***Archeology and Historic Preservation***

---

1063 S. Capitol Way, Suite 106, Olympia, WA 98501  
Mailing Address: P.O. Box 48343, Olympia, WA 98504-8343  
TEL: (360) 586-3065  
FAX: (360) 586-3067  
WEBSITE: [www.dahp.wa.gov](http://www.dahp.wa.gov)  
CONTACT: Allyson Brooks, Ph.D., State Historic Preservation Officer, [allyson.brooks@dahp.wa.gov](mailto:allyson.brooks@dahp.wa.gov)  
Rob Whitlam, Ph.D., State Archaeologist, [rob.whitlam@dahp.wa.gov](mailto:rob.whitlam@dahp.wa.gov)

The Department of Archaeology and Historic Preservation (DAHP) is Washington State's primary agency with knowledge and expertise in historic preservation. We advocate for the preservation of Washington's irreplaceable historic and cultural resources which include significant buildings, structures, sites, objects, and districts. Through education and information, we provide leadership for the protection of our shared heritage.

## ***Artisans at the Dahmen Barn***

---

419 N. Park Way, Uniontown WA 99179  
Mailing Address: P.O. Box 36, Uniontown, WA 99179  
TEL: (509) 229-3414  
FAX: (509) 229-3700  
E-MAIL: [info@artisanbarn.org](mailto:info@artisanbarn.org)  
WEBSITE: [www.artisanbarn.org](http://www.artisanbarn.org)  
CONTACT: Leslee Miller, Manager  
Artisans at the Dahmen Barn provides local artists and crafts people working studio space along with the opportunity to showcase their work to the public. There are ten studio spaces at the barn, where more than 20 artisans create their work

and are willing to talk to visitors about their creative process. Performing arts are also showcased in the Hay Loft Hall and regularly scheduled classes for both children and adults are held. Each month there is an exhibit of work from a regional artist, and the retail shop sells on consignment fine art and fine craft items created by more than 100 regional people. The highly visible landmark facility is the big white barn surrounded by the famous iron wheel fence on highway 195 just south of Pullman. There is no daily admission fee and the three story building is fully handicap accessible.

## ***Artist Trust***

---

1835 12th Ave., Seattle, WA 98122-2437  
TEL: (206) 467-8734 (Administrative Offices)  
(866)- 21-TRUST (87878)  
FAX: (206) 467-9633  
E-MAIL: [info@artisttrust.org](mailto:info@artisttrust.org)  
WEBSITE: [www.artisttrust.org](http://www.artisttrust.org)  
CONTACT: Fidelma McGinn, Executive Director, [fidelma@artisttrust.org](mailto:fidelma@artisttrust.org)  
Ben Mitchell, [benm@northwestmuseum.org](mailto:benm@northwestmuseum.org) (local)

Artist Trust, founded in 1987, is a not-for-profit organization whose sole mission is to support and encourage individual artists working in all disciplines in order to enrich community life throughout Washington State. It offers grants programs and an exceptionally wide range of relevant information and professional development services.

## ***ArtsEd Washington***

---

**(Washington Alliance for Arts Education)**  
158 Thomas St., Ste. 16, Seattle, WA 98109  
TEL: (206) 441-4501  
FAX: (206) 441-3042  
E-MAIL: [info@artsedwashington.org](mailto:info@artsedwashington.org)  
WEBSITE: [www.artsedwashington.org](http://www.artsedwashington.org)  
CONTACT: Una McAlinden, Executive Director  
Mission: To promote comprehensive, sequential arts education for all students through leadership advocacy and communication.

## ***The Arts Legal Clinic***

---

**(see Washington Lawyers for the Arts)**  
MAIL TO: 701 5<sup>th</sup> Ave., Ste 4100, Seattle, WA 98104  
APPTS AT: Gonzaga University School of Law, 721 N Cincinnati St, Spokane, WA 99220-3528  
TEL: (206) 328-7053  
FAX: (206) 545-4866  
E-MAIL: [info@thewla.org](mailto:info@thewla.org)  
WEBSITE: [www.thewla.org](http://www.thewla.org)  
CONTACT: Cal Kinnear, Administrative Director  
A \$20 donation is suggested to defray overhead expenses, like internet access and phone service. Appointments are required. Please call or e-mail Washington Lawyers for the Arts to schedule an appointment.

## ***Arts and Visually Impaired Audiences***

---

400 Harvard Ave. E., #202, Seattle, WA 98102  
TEL: (206) 323-7190  
VOICEMAIL: (206) 528-2085  
FAX: (206) 528-2085  
E-MAIL: aviaboss@artsvia.org  
WEBSITE: www.artsvia.org  
CONTACT: Jesse Minkert, Executive Director  
Arts and Visually Impaired Audiences' mission is to increase the knowledge of, and involvement in, the arts by the State of Washington's visually impaired residents.

## ***Arts Network of Washington State***

---

**(See Washington State Arts Alliance and Foundation)**

TEL: (206) 448-1909  
E-MAIL: info@wsartsalliance.com  
CONTACT: Mary Langholz, Executive Director, mary@wsartsalliance.com

## ***Artsfund***

---

10 Harrison St., Ste. 200, Seattle, WA 98109  
Mailing Address: P.O. Box 19780, Seattle, WA 98109  
TEL: (206) 281-9050  
FAX: (206) 281-9175  
E-MAIL: info@artsfund.org  
WEBSITE: www.artsfund.org  
CONTACT: James F. Tune, President & CEO, jimtune@artsfund.org

ArtsFund strengthens arts in the region by raising and responsibly allocating funds to promote artistic and organizational excellence and by advocating for all the arts.

## ***Building for the Arts***

---

Department of Community, Trade and Economic Development (CTED), Capital Programs, Box 42525, Olympia, WA 98504-2525  
TEL: (360) 725-3075  
FAX: (360) 664-3123  
E-MAIL: capprograms@cted.wa.gov  
WEBSITE: www.cted.wa.gov/CapitalPrograms  
CONTACT: Daniel Aarthun, Program Manager, dana@cted.wa.gov

Building for the Arts awards grants to 501(c)(3) nonprofit performing arts, art museums, and cultural organizations to defray up to 20 percent of eligible capital costs for the acquisition, construction, and/or major renovation of capital facilities.

## ***Centrum Foundation***

---

P O Box 1158, Port Townsend, WA 98368  
TEL: (360) 385-3102  
FAX: (360) 385-2470  
E-MAIL: info@centrum.org  
WEBSITE: www.centrum.org  
CONTACT: John MacElwee, Executive Director, johnm@centrum.org

Centrum, in partnership with Fort Worden State Park, is a gathering place for artists and creative thinkers from around the world, students of all ages and backgrounds, and audiences seeking extraordinary cultural enrichment. Centrum promotes creative experiences that change lives. Mission: To assist those who seek creative and intellectual growth and to present visual, literary and performing arts to the public.

## ***Crawford Gallery***

---

316 E. Crawford, Deer Park, WA 99006-0228  
TEL: 276-8884  
FAX: 276-5764  
E-MAIL: dpac@wildblue.net  
CONTACT: Brenda Lippert  
The Crawford Gallery features contemporary artwork by regional and local artists.

## ***Create Arts Center***

---

900 W. 4th St., Newport, WA 99156  
Mailing Address: P.O. Box 1173, Newport, WA 99156  
TEL: (509) 447-9277  
E-MAIL: create@conceptcable.com  
WEBSITE: www.createarts.org  
CONTACT: Bev Numbers, President  
Create's mission is to provide opportunities for expression, enjoyment, and appreciation of the arts and humanities in the Pend Oreille Valley through individual and community participation. The Create Arts Center, a community center for the arts, provides an outlet for instruction in the arts, small performances, lectures, poetry readings, exhibits and more.

## ***Deer Park Arts Commission***

---

316 E. Crawford, Deer Park, WA 99006-0228  
TEL: 276-8884  
FAX: 276-5764  
E-MAIL: dpac@wildblue.net  
CONTACT: Denny Lippert

## ***Ethnic Heritage Council***

---

305 Harrison Ste. 304, Seattle, WA 98109  
TEL: (206) 443-1410  
FAX: (206) 443-1408  
E-MAIL: ehc@seattle.gov  
WEBSITE: www.ethnicheritagecouncil.org  
Mission: To preserve the unique mix of cultural traditions that enrich our Northwest communities.

## ***Executive Alliance***

---

508 2nd Ave. West, Seattle, WA 98119  
TEL: (206) 328-3836  
FAX: (206) 529-3835  
E-MAIL: info@exec-alliance.org  
WEBSITE: www.exec-alliance.org  
The Executive Alliance assumed the management of the programs of The Evergreen State Society. This is a membership association whose mission is to promote a powerful non-profit sector supporting vibrant communities and a thriving economy.

## ***Gail's Guides***

---

134 West Canyonview Drive, Longview, WA 98632

E-MAIL: [info@gailsguides.com](mailto:info@gailsguides.com)

WEBSITE: [www.gailsguides.com](http://www.gailsguides.com)

Gail's Guides has been publishing event guides since 1984. Each year Gail's Guides publishes the popular event guides, "The Wonderful Washington Events Guide," "The Famous Oregon Events Guide," and the "The Bazaar Guide ~ Pacific Northwest" Each of these guides has hundreds of events and covers a full year (or more). Most events have a detailed description, dates, location, contact name and phone number. Some events have maps.

## ***Heritage Resource Center***

---

1911 Pacific Avenue, Tacoma WA 98402

TEL: (253) 272-3500

FAX: (253) 272-9518

E-MAIL: [mvessey@wshts.wa.gov](mailto:mvessey@wshts.wa.gov)

WEBSITE: [www.washingtonhistory.org/heritageservices](http://www.washingtonhistory.org/heritageservices)

The Heritage Resource Center (HRC) is an office of the Historical Society. The HRC's primary goal is to work with museums and heritage organizations throughout the state as they grow their capabilities. HRC serves as a provider of technical assistance, traveling exhibits, and professional development opportunities as well as administrator of capital grant funds. The HRC office is in the Washington State Capital Museum in Olympia.

## ***Humanities Washington***

---

1204 Minor Ave. Seattle, WA 98101-2825

TEL: (206) 682-1770

FAX: (206) 682-4158

E-MAIL: [info@humanities.org](mailto:info@humanities.org)

WEBSITE: [www.humanities.org](http://www.humanities.org)

CONTACT: Julie Ziegler, Executive Director, [julie@humanities.org](mailto:julie@humanities.org)

Dedicated to providing humanities programs that nurture creativity, promote dialogue, and spark critical thinking.

## ***Northeast Washington Arts Council***

---

P.O. Box 375, Colville, WA 99114

TEL: (509) 936-1527

E-MAIL: [colvillearts@gmail.com](mailto:colvillearts@gmail.com)

WEB: [www.colvilleartsfoundation.org](http://www.colvilleartsfoundation.org)

CONTACT: Shelly Graham, President

The mission of the Northeast Washington Arts Council (formerly the Colville Arts Foundation), is to promote interest in and stimulate the growth of fine arts and crafts in Ferry, Stevens, and Pend Oreille counties through public awareness and public art experiences, including formulating on-going arts-based classes open to adults and children. NEWAArts strives to bring quality art experiences to the community and to encourage local efforts in the creative fields by giving local qualified artists, artisans and fine crafters a chance to display their work in a professional environment.

## ***Northwest Folklife***

---

158 Thomas St., Ste. 32, Seattle, WA 98109

MAIL TO: Northwest Folklife, 305 Harrison St., Seattle, WA 98109

TEL: (206) 684-7300

FAX: (206) 684-7190

E-MAIL: [folklife@nwfolklife.org](mailto:folklife@nwfolklife.org)

WEBSITE: [www.nwfolklife.org](http://www.nwfolklife.org)

CONTACT: Robert Townsend, Executive Director, [rob@nwfolklife.org](mailto:rob@nwfolklife.org)

Northwest Folklife creates opportunities for individuals and communities of the Pacific Northwest to celebrate, share and sustain the vitality of folk, ethnic and traditional arts for present and future generations. Northwest Folklife carries out its mission in a variety of ways, most notably through the annual production of the free Northwest Folklife Festival.

## ***Office of Superintendent of Public Instruction***

---

c/o AnnRené Joseph, Arts Program Supervisor

P.O. Box 47200, Olympia, WA 98504-7200

TEL: (360) 725-6365

FAX: (360) 725-6017

E-MAIL: [annrene.joseph@k12.wa.us](mailto:annrene.joseph@k12.wa.us)

WEBSITE: [www.k12.wa.us/CurriculumInstruct/Arts/default.aspx](http://www.k12.wa.us/CurriculumInstruct/Arts/default.aspx)

## ***Palouse Women Artists***

---

**Women's Caucus for Art – Northern Idaho, Eastern Washington Chapter**

TEL: (208) 883-1451

E-MAIL: [palousewca@yahoo.com](mailto:palousewca@yahoo.com)

[lwinmacd@yahoo.com](mailto:lwinmacd@yahoo.com)

WEBSITE: [www.palousewomenartists.org](http://www.palousewomenartists.org)

CONTACT: Laurel Macdonald, President

The Women's Caucus for Art, founded in 1972, is a national organization unique in its multidisciplinary, multicultural membership of artists, art historians, students and educators, gallery and museum professionals and others involved in the visual arts. The Women's Caucus for Art has focused attention on the enormous contributions of women and people of color throughout the history of art. The organization's emphasis is on women working in the visual arts professions today. The Women's Caucus for Art has established a national network through research, exhibitions, conferences and honor awards for achievement.

## ***Pend Oreille Players Association***

---

240 N. Union, Newport, WA 99156

TEL: (509) 671-3389

E-MAIL: [mail@pendoreilleplayers.org](mailto:mail@pendoreilleplayers.org)

[popa@povn.com](mailto:popa@povn.com)

WEBSITE: [www.pendoreilleplayers.org](http://www.pendoreilleplayers.org)

CONTACT: Donna Maki, President

Pend Oreille Players Association (POPA) explores all aspects of theatre arts — the performing and production of musical, dramatic and comedic community theatre. Their mission is to nurture, inspire, educate and entertain the people of the Pend Oreille Valley of Washington and Idaho by providing opportunities to experience all aspects of theatre arts.

## ***Secretary of State's Office***

---

Legislative Building, P O Box 40220, Olympia, WA 98504-0220

TEL: (360) 902-4151  
E-MAIL: mail@secstate.wa.gov  
WEBSITE: www.secstate.wa.gov

## ***VSA Arts of Washington***

---

**(formerly Very Special Arts)**

305 Harrison St. N. #303, Seattle, WA 98109

TEL: (206) 443-1843  
FAX: (206) 448-9585  
E-MAIL: info@vsaaw.org  
WEBSITE: www.vsaaw.org  
CONTACT: Deborah Witmer, Executive Director,  
deborahw@vsaaw.org

VSA Arts of Washington is a state-wide organization dedicated to the promotion and development of opportunities in the arts by, for, and with individuals who have disabilities.

## ***Washington Bluegrass Association***

---

P.O. Box 490, Toledo, WA 98591

E-MAIL: wolsl@toledotel.com  
WEBSITE: www.washingtonbluegrassassociation.org  
CONTACT: Dee Wolslegel, President, (360) 864-2031

The Washington Bluegrass Association is a nonprofit corporation founded in 1982. Its purpose is to promote, encourage, foster, and cultivate the preservation and understanding, enjoyment and support of bluegrass and other closely related music of these United States of America.

## ***Washington Lawyers for the Arts***

---

1525 Fourth Avenue, Ste. 800, Seattle, WA 98101

TEL: (206) 328-7053  
FAX: (206) 545-4866  
E-MAIL: info@thewla.org  
WEBSITE: www.thewla.org  
CONTACT: Cal Kinneer, Administrative Director

Founded in 1976, Washington Lawyers for the Arts (WLA) is a nonprofit service organization dedicated to supporting the arts in Washington State by creating alliances and making legal resources accessible to artists and arts organizations of all disciplines. Washington Lawyers for the Arts provides twice-monthly Arts Legal Clinics for artists and arts organizations from Washington State. Volunteer arts and entertainment attorneys provide half-hour private consultations for a \$20 suggested donation. Workshops about legal issues such as copyright, trademark, and contract issues are also offered throughout the year.

## ***Washington Museum Association***

---

P.O. Box 10633, Yakima, WA 98909

TEL: (360) 466-3365  
E-MAIL: contact@washingtonstatemuseums.org  
WEBSITE: www.washingtonstatemuseums.org  
CONTACT: Karen Marshall, President

The Washington Museum Association was established to represent and serve museums of all types and sizes throughout Washington State, serving as a clearing house and communication network for information of special interest to museums.

## ***Washington State Arts Alliance (WSAA) and Foundation***

---

305 Harrison, Seattle, WA 98109

TEL: (206) 448-1909  
E-MAIL: info@wsartsalliance.com  
WEBSITE: www.wsartsalliance.com  
CONTACT: Kim Thomas, Program Director, kim@wsartsalliance.com

Brenda Nienhouse, (509) 326-3136 -local

WSAA, the only statewide arts advocacy organization, works to promote public funding, legislation and policy favorable to the arts. WSAA represents arts organizations, administrators, arts commissioners, artists, business people, arts educators, policymakers and individuals from all walks of life who are committed to keeping the arts strong in our public schools and at the center of community life across Washington State. WSAA is an active and growing membership organization managed by a volunteer board that represents all parts of the state and all creative disciplines. WSAA is supported entirely by membership dues and staffed by an executive director, program director and events coordinator. WSAA also contracts with a professional arts lobbyist in Olympia.

## ***Washington State Arts Commission***

---

711 Capitol Way S, Ste. 600, Olympia, WA 98501

Mailing Address: P O Box 42675, Olympia, WA 98504-2675

TEL: (360) 753-3860  
FAX: (360) 586-5351  
E-MAIL: info@arts.wa.gov  
WEBSITE: www.arts.wa.gov  
CONTACT: Kris Tucker, Executive Director, (360) 586-2423,  
krist@arts.wa.gov

*PROGRAMS: (all 360 area code unless otherwise shown)*

### ***Arts in Education***

Lisa Jaret, Program Manager, 586-2418, lisa.jaret@arts.wa.gov  
Christel Ratliff, Administrative Assistant, 586-0026, christel.ratliff@arts.wa.gov

### ***Art in Public Places***

Mike Sweney, Program Manager, 586-2422, mike.sweney@arts.wa.gov  
Deane Shellman, Program Coordinator, 753-5894, deane.shellman@arts.wa.gov

### ***Grants to Organizations***

Mayumi Tsutakawa, Program Manager, 586-0424, mayumi.tsutakawa@arts.wa.gov  
Christel Ratliff, Administrative Assistant, 586-0026, christel.ratliff@arts.wa.gov

### ***Administration***

Mark Gerth, Communications Manager, 586-8093, mark.gerth@arts.wa.gov  
Lou MacMillan, Deputy Director, 586-5350, lou.macmillan@arts.wa.gov  
Leslie Pope, Executive Assistant, 753-3860, leslie.pope@arts.wa.gov

## ***Washington State Arts Commission***

---

**Mission:** The Washington State Arts Commission cultivates a thriving environment for creative expression and appreciation of the arts for the benefit of all. Priorities:

- \* Expand support for art organizations and artists in communities statewide.
- \* Support locally determined needs across the state.
- \* Strengthen the arts as part of Washington students' education from kindergarten through high school graduation.
- \* Sustain equity and diversity in WSAC funding and programs.
- \* Develop traditional and folk arts as part of Washington's cultural heritage.

## ***Washington State Department of Commerce***

---

Raad Building, 128 10th Ave. SW, P.O. Box 42525, Olympia, WA 98504-2525

TEL: (360) 725-4000

FAX: (360) 586-8440

E-MAIL: [info@cted.wa.gov](mailto:info@cted.wa.gov)

WEBSITE: [www.commerce.wa.gov](http://www.commerce.wa.gov)

The Washington State Department of Commerce is the lead agency charged with enhancing and promoting sustainable communities and economic vitality in the state of Washington.

## ***509Art***

---

E-MAIL: [info@509art.org](mailto:info@509art.org)

CONTACT: Jenny Rieke

509Art is a place for the creative community of the 509 area code (Eastern Washington) to discover their compatriots in the arts. 509Arts meets on the third Friday of every month for a Salon.

The Washington State Arts Commission (WSAC) has created **The Washington Local Arts Agencies Directory** which contains information supplied by arts agencies throughout the state. To download a copy visit <http://www.arts.wa.gov/community/resources.shtml>. Please contact Bitsy Bidwell at [bitsyb@arts.wa.gov](mailto:bitsyb@arts.wa.gov) to share your updates, to request search information from the database, or if you have any questions about the Community Arts Development Program.

# REGIONAL RESOURCES

---

## ***Arts Northwest***

---

P O Box 1354, Port Angeles, WA 98362  
TEL: (360) 457-9290  
FAX: (360) 457-9294  
E-MAIL: admin@artsnw.org  
WEBSITE: www.artsnw.org  
CONTACT: Karen Hanan, Executive Director  
Arts Northwest is a non profit membership organization facilitating professional interaction between performing arts presenters, performing artists, management and performing arts service providers throughout the western U.S and Canada.

## ***The Art Spirit Gallery***

---

415 Sherman Ave., Coeur d'Alene, ID 83814  
TEL: (208) 765-6006  
E-MAIL: steve@artspiritgallery.com  
WEBSITE: www.theartspiritgallery.com  
CONTACT: Steve Gibbs  
Offers a featured show each month as well as a changing exhibit of original fine art by other top artists of the region.

## ***Assembly of British Columbia Arts Councils***

---

Box 92 Stn. A, Nanaimo, BC, V9R 5K4 Canada  
TEL: (250) 754-3388  
FAX: (250) 754-3390  
TOLL FREE: (888) 315-2288  
E-MAIL: info@assemblybcartscouncils.ca  
WEBSITE: www.assemblybcartscouncils.ca  
The Assembly of British Columbia Arts Councils is dedicated to connecting communities to promote and advance community arts and cultural development in British Columbia.

## ***Christian Youth Theater (CYT) North Idaho***

---

Office: 923 Sherman Avenue, Suite 202, Coeur d'Alene, ID 83814  
Mailing Address: PO Box 3250, Coeur d'Alene, ID 83816  
TEL: (208) 765-8600  
E-MAIL: office@cytnorthidaho.com  
WEBSITE: www.cytnorthidaho.com  
CONTACT: Bliss Lanier, Executive Director, blisslanier@cytnorthidaho.com  
Trigger Weddle, Artistic Director, trigger@cytnorthidaho.com

Christian Youth Theater is an after-school theater arts training program for kids ages 6 - 18. CYT, with two locations, is committed to providing wholesome family entertainment while teaching children and young adults theater skills with an emphasis on Judeo-Christian values. Classes are offered three times a year. Each term culminates in the performance of a fully staged musical. CYT - Quality educational theater for children...by children.

## ***Citizens' Council for the Arts***

---

P.O. Box 901, Coeur d'Alene, ID 83816-0901  
TEL: (208) 667-9346  
FAX: (208) 667-9346  
E-MAIL: cca@artonthegreen.org  
WEBSITE: www.artonthegreen.org  
The Citizens' Council for the Arts (CCA) is a nonprofit group formed of over 500 volunteers to encourage, promote, and support the arts in the Coeur d'Alene community. Projects include ArtShop, Art-in-the-Schools, Lake City Young Artists and Writers Workshop, Summer Art Institute, The Corner Gallery at N. Idaho College and the popular Art on The Green.

## ***Coeur d'Alene Art Association***

---

PO Box 759, Hayden, ID 83835  
TEL: (208) 777-7234  
WEBSITE: www.coeurdaleneartassoc.org  
CONTACT: Pat Desjarlais, President  
The Coeur d'Alene Art Association is a community art club that was founded in 1961 by Ruth Willoughby and Node Meyers with thirteen original members and incorporated as a non-profit corporation under the laws of the State of Idaho.

## ***Coeur d'Alene Arts and Culture Alliance***

---

105 North First Street, Coeur d'Alene, ID 83814  
TEL: (208) 292-1629  
E-MAIL: raechelle@cdachamber.com  
WEBSITE: www.artsincda.org  
CONTACT: Raechelle Clark, Alliance Manger  
The Coeur d'Alene Arts and Culture Alliance promotes and educates alliance members, the community, and visitors to the area about the arts and cultural activities available in our community and assists artists and arts entities to be successful. The Coeur d'Alene Arts and Culture Alliance is a member based organization and the proud presenters of several events: Music Walk, Kids' Carnival (a one day event with numerous art workshops with over 500 kids in attendance!), Art Walk (a standing tradition in Coeur d'Alene on the 2<sup>nd</sup> Friday of every month from April through December), an outdoor concert series (featuring local musicians every Thursday night for nine weeks), Art From The Heart (a fall festival celebrating the arts in Coeur d'Alene), Music for the Wise (a program that provides musical entertainment for the elderly in assisted living and nursing home facilities!), and Buckets, Blues & Brews (a collaborative fundraiser with other art nonprofits).

## ***Coeur d'Alene Summer Theatre***

---

P.O. Box 1119, Coeur d'Alene, ID 83816

TEL: 1-800-423-2849  
(208) 769-7780

FAX: (208) 769-7856

E-MAIL: tickets@cdasummertheatre.com

WEBSITE: www.cdasummertheatre.com

CONTACT: Laura Little, managing Director

Idaho's oldest performing arts organization, Coeur d'Alene Summer Theatre specializes in production of full-scale

Broadway musicals during a 12-week, 36-performance season during the months of June, July and August. Coeur d'Alene Summer Theatre performs in The Schuler Performing Arts Center (1178 seats) on the campus of North Idaho College.

## ***Confluence Gallery***

---

104 Glover Street, P.O. Box 716, Twisp, WA 98856

TEL: (509)997-2787

E-MAIL: info@confluencegallery.com

WEBSITE: www.confluencegallery.com

Here where rivers meet, Confluence brings artists, viewers & students together to enrich the lives of all.

## ***Devin Galleries***

---

507 Sherman Avenue, Coeur d'Alene, ID 83814

TEL: (208) 667-2898  
(800) 206-2787

E-MAIL: info@devingalleries.com

WEBSITE: www.devingalleries.com

CONTACT: Skip Peterson

Located in downtown Coeur d'Alene, ID, Devin Galleries features nearly 7,000 square feet of artwork including original paintings, bronze and stone sculpture, contemporary art glass, limited edition prints, wood and ceramic vessels, jewelry and much more.

## ***Festival at Sandpoint***

---

Old Power House, 120 E. Lake St., Suite 207, Sandpoint, ID 83864

Mailing Address: P.O. Box 695, Sandpoint, ID 83864

TEL: (888) 265-4554

FAX: (208) 263-6858

E-MAIL: festival@sandpoint.net

WEBSITE: www.festivalatsandpoint.com

CONTACT: Diana "Dyno" Wahl, Executive Director

The Festival at Sandpoint brings world-class classical, jazz, blues, folk, world and popular music to North Idaho. Drawing audiences upwards of 20,000 per season from the region to its summer concert series presented on the shores of Lake Pend Oreille, the Festival has expanded to become one of the largest arts organizations in Idaho. The Festival has an educational mission to bring classical music to North Idaho elementary school students.

## ***Idaho Commission on the Arts (ICA)***

---

2410 North Old Penitentiary Rd., Boise, ID 83712

Mailing Address: P.O. Box 83720, Boise, ID 83720-0008

TEL: (208) 334-2119 or 1-800-ART FUND (1-800-278-3863)

FAX: (208) 334-2488

E-MAIL: info@arts.idaho.gov

WEBSITE: www.arts.idaho.gov

CONTACT: Michael Faison, Executive Director, mfaison@arts.idaho.gov

The Idaho Commission on the Arts endeavors to provide quality experiences in the arts for all Idahoans. Established in 1966, it is charged by state law to "stimulate and encourage throughout the state the study and presentation of the arts and public interest and participation therein..." The Commission must also "encourage and assist freedom of artistic expression essential to the well-being of the arts."

## ***Kootenai North Idaho Film Video Entertainment Society (KNIFVES)***

---

2900 Government Way, Suite 62, Coeur d'Alene, ID 83815

TEL: (208) 772-0933

E-MAIL: wj@lazerus.tv

WEBSITE: www.knifves.org

CONTACT: W. J. Lazerus

KNIFVES is a non-profit 501(c)(3) organization dedicated to providing an open forum to all Inland Northwest film, video and live entertainment professionals, amateurs and enthusiasts to promote knowledge, education, training and networking.

## ***Lake City Playhouse***

---

1320 E. Garden Ave., Coeur d'Alene, ID 83814

TEL: (208) 667-1323

FAX: (208) 667-6328

E-MAIL: lakecityplayhouse@verizon.net

lcplayhouse@gmail.com

WEBSITE: www.lakecityplayhouse.org

CONTACT: George Green, Executive Director

The Lake City Playhouse is a 501(c)(3) non-profit community theater. The Lake City Playhouse has been providing the local community affordable access to quality theater productions since 1961. Since that time, they've grown to their present size, producing seven main season shows and four children's workshops.

## ***Lost Horse Press***

---

105 Lost Horse Lane, Sandpoint, ID 83864

TEL: (208) 255-4410

FAX: (208) 255-1560

E-MAIL: losthorsepress@mindspring.com

WEBSITE: www.losthorsepress.org

CONTACT: Christine Holbert

Established in 1998, Lost Horse Press – a non-profit independent press – publishes poetry titles of high literary merit, and makes available other fine contemporary literature through cultural, educational, and publishing programs and activities. The Lost Horse New Poets, Short Books Series – edited by Marvin Bell – is dedicated to works often ignored by conglomerate publishers which are so much in danger of vanishing into obscurity in what has become the age of chain stores and mass appeal food, movies, art, and books.

## ***Methow Arts Alliance***

---

P.O. Box 723, Twisp, WA 98856  
TEL/FAX: (509) 997-4004  
E-MAIL: info@methowartsalliance.org  
WEBSITE: www.methowartsalliance.org  
CONTACT: Kate Jones, Director  
Amanda Jackson, Community Relations &  
Development Director  
Molly Filer, Arts Education Coordinator

Methow Arts Alliance is a charitable not-for-profit organization that enriches the lives of people living in rural Okanogan County by making the arts an integral and dynamic aspect of community and economic vitality, public education and civic life. It is a regional leader in production, coordination, support and sponsorship of the arts; a bridge between civic and cultural communities in the Methow Valley; a recognized promoter of education reform throughout the arts in the schools and community.

## ***Montana Arts Council***

---

830 N. Warren St., Helena, MT 59620  
Mailing Address: PO Box 202201, Helena MT 59620-2201  
TEL: (406) 444-6430  
FAX: (406) 444-6548  
E-MAIL: mac@mt.gov  
WEBSITE: www.art.mt.gov  
CONTACT: Arlynn Fishbaugh, Executive Director,  
afishbaugh@mt.gov

The Montana Arts Council is the agency of state government established to develop the creative potential of all Montanans, advance education, spur economic vibrancy and revitalize communities through involvement in the arts.

## ***Moscow Arts Commission***

---

206 E. Third St., Moscow, ID 83843  
Mailing Address: P.O. Box 9203, Moscow, ID 83843  
TEL: (208) 883-7036  
E-MAIL: kburns@ci.moscow.id.us  
WEBSITE: www.moscow.id.us/art/index.asp  
CONTACT: Kathleen Burns, Arts Director

The purpose of the Moscow Arts Commission is to enrich the life of the community by celebrating and cultivating the arts.

## ***Northwest Designer Craftsmen***

---

PO Box 31611, Seattle, WA 98103  
TEL: (206) 932-2298  
E-MAIL: info@nwdc-online.org  
WEBSITE: www.nwdc-online.org  
CONTACT: Nan Goss, President

A non-profit organization founded in 1954 that endeavors to establish high standards of design, workmanship and business practice among regional artisans. NWDC promotes public interest in the crafts and provides a voice for the craftsmen in the five state Northwest region. Artists in Washington, Oregon, Idaho, Montana and Alaska who work professionally in clay, wood, glass, metal, fiber and/or mixed media are members. Other members support the crafts in the Pacific Northwest as educators, managers of non-profit arts organizations, or buyers of art.

## ***Opera Coeur d'Alene***

---

P.O. Box 3106 Coeur d'Alene, ID 83816  
TEL: (208) 964-4469  
FAX: (208) 666-8869  
E-MAIL: info@operacda.org  
WEBSITE: www.operacda.org  
CONTACT: Anne Manzo, Artistic Director  
Opera Coeur d'Alene (formerly Opera Plus!) is an all-volunteer and locally operated 501(c)(3) nonprofit organization that brings high quality opera experiences to audiences in our region in a variety of ways, including public school outreach, adult education, free public performances, concerts, and an annual fully-staged opera.

## ***Oregon Arts Commission***

---

775 Summer St. N.E. Ste. 200, Salem, OR 97301-1280  
TEL: (503) 986-0082  
TDD: (800) 735-2900  
FAX: (503) 986-0260  
E-MAIL: oregon.artscomm@state.or.us  
WEBSITE: www.oregonartscommission.org  
CONTACT: Christine T. D'Arcy, Executive Director, (503) 986-0087, christine.t.darcy@state.or.us

The Oregon Arts Commission was established in 1967 to foster the arts in Oregon and ensure their excellence. Nine commissioners, appointed by the governor, determine policies, establish Long-Range Plans, and review applications to grants programs to determine funding levels.

## ***Panida Theater***

---

300 N. 1<sup>st</sup> Avenue, Sandpoint, ID 83864  
Mailing Address: P.O. Box 1981, Sandpoint, ID 83864  
TEL: (208) 263-9191  
FAX: (208) 255-7801  
E-MAIL: panida@nidaho.net  
WEBSITE: www.panida.org  
CONTACT: Karen Bowers, Executive Director  
Historic theater in downtown Sandpoint, ID with a year-round offering of films, concerts, and a variety of performing arts events.

## ***Pend Oreille Arts Council (POAC)***

---

Old Power House, 120 E. Lake Street, Suite 215, Sandpoint, ID 83864  
Mailing Address: P.O. Box 1694, Sandpoint, ID 83864  
TEL: (208) 263-6139  
FAX: (208) 255-1869  
E-MAIL: art@artinsandpoint.org  
art@sandpoint.net  
WEBSITE: www.artinsandpoint.org  
CONTACT: Kim Queen, Executive Director, poac@sandpoint.net

The mission of the Pend Oreille Arts Council (POAC) - a non profit organization founded in 1978 - is to facilitate and present the finest quality experience in the arts for the people of northern Idaho. POAC sponsors a variety of events, including: The acclaimed POAC Performance Series, year-round gallery openings, rotating exhibits in several Satellite Galleries around town, the Annual Arts & Crafts Fair, ArtWalk and free summer concerts.

## ***Timber Stand Gallery***

---

225 Cedar Street, Sandpoint, ID 83864

TEL: 1-800-607-7748 or 208-263-7748

E-MAIL: [jimmic22@yahoo.com](mailto:jimmic22@yahoo.com)

WEBSITE: [www.timberstand.com](http://www.timberstand.com)

CONTACT: Jim Quinn

Featuring works from regional artists from the Inland Northwest. Located at the Cedar Street Bridge in downtown Sandpoint.

## ***Western Arts Alliance (WAA)***

---

715 SW Morrison, Suite 600, Portland, OR 97205-3102

TEL: (503) 274-4729

FAX: (503) 274-4768

E-MAIL: [staff@westarts.org](mailto:staff@westarts.org)

WEBSITE: [www.westarts.org](http://www.westarts.org)

CONTACT: Tim Wilson , Executive Director, [twilson@westarts.org](mailto:twilson@westarts.org)

Membership organization of touring & performing arts professionals engaged in producing, promoting and presenting performing arts throughout the Western region. Serving members since 1967, WAA's core programs and functions include the annual conference, professional development, communications and publications, membership services and advocacy. WAA members include 350 presenting organizations and more than 2700 touring artists and companies.

## ***Wytherngate Press, Inc.***

---

PO Box 1967, Coeur d' Alene, ID 83814

TEL: (208)-661-4566

FAX: 1-815-366-9780

E-MAIL: [wytherngatepress@gmail.com](mailto:wytherngatepress@gmail.com)

WEBSITE: [www.wytherngatepress.com](http://www.wytherngatepress.com)

CONTACT: Michael Mogen, Editor

Wytherngate Press was established in 2003. Our purpose is to bring worthy literary works into publication that may not meet the highly-charged marketing criteria of the major publishing houses. We accept manuscripts in non-fiction, historical fiction, fantasy, mystery, inspirational, and romance and publish both print and eBook editions.

# REGIONAL RESOURCES

---

## ***Alliance for Arts Education***

---

### **The John F Kennedy Center for the Performing Arts**

P.O. Box 101510, Arlington, VA 22210

TEL: (202) 416-8817

FAX: (202) 416-8802

E-MAIL: [kcaaen@kennedy-center.org](mailto:kcaaen@kennedy-center.org)

WEBSITE: [www.kennedy-center.org/education/kcaaen](http://www.kennedy-center.org/education/kcaaen)

The Kennedy Center Alliance for Arts Education Network (KCAAEN) is a coalition of statewide non-profit Alliances for Arts Education working in partnership with the John F. Kennedy Center for the Performing Arts to support policies, practices, programs, and partnerships that ensure the arts are an essential part of American K-12 education.

## ***American Association of Museums***

---

1575 Eye Street NW, Suite 400, Washington DC 20005

TEL: (202) 289-1818

FAX: (202) 289-6578

E-MAIL: [servicecentral@aam-us.org](mailto:servicecentral@aam-us.org)

WEBSITE: [www.aam-us.org](http://www.aam-us.org)

American Association of Museums' mission is to enhance the value of museums to their communities through leadership, advocacy, and service.

## ***American Craft Council***

---

72 Spring Street, 6<sup>th</sup> Floor, New York, NY 10012-4019

TEL: (212) 274-0630

FAX: (212) 274-0650

E-MAIL: [council@craftcouncil.org](mailto:council@craftcouncil.org)

WEBSITE: [www.craftcouncil.org](http://www.craftcouncil.org)

CONTACT: Andrew Glasgow, Executive Director,  
[aglasgow@craftcouncil.org](mailto:aglasgow@craftcouncil.org)

The mission of the American Craft Council is to promote understanding and appreciation of contemporary American craft.

## ***Americans for the Arts***

---

1000 Vermont Avenue NW., 6<sup>th</sup> floor, Washington, DC 20005

TEL: (202) 371-2830

FAX: (202) 371-0424

WEBSITE: [www.artsusa.org](http://www.artsusa.org)

Americans for the Arts works with cultural organizations, arts, businesses and government leaders and patrons to provide leadership, research, visibility, professional development and advocacy to advance support for America's arts and culture.

## ***Arts, Crafts, & Theater Safety (A.C.T.S.)***

---

181 Thompson Street #23, New York, NY 10012-2586

TEL: (212) 777-0062

E-MAIL: [actsnyc@cs.com](mailto:actsnyc@cs.com)

WEBSITE: [www.artscraftstheatersafety.org](http://www.artscraftstheatersafety.org)

ACTS is a non-profit corporation that provides health, safety, industrial hygiene, technical services, and safety publications to the arts, crafts, museums, and theater communities.

## ***Arts Extension Service***

---

### **University of Massachusetts, Amherst, Division of Outreach**

100 Venture Way, Suite 201, Hadley, MA 01035

TEL: (413) 545-2360

FAX: (413) 577-3838

E-MAIL: [aes@outreach.umass.edu](mailto:aes@outreach.umass.edu)

WEBSITE: [www.umass.edu/aes](http://www.umass.edu/aes)

The Arts Extension Service (AES) works in the university outreach, community development tradition. Originally serving the communities of western Massachusetts, AES teaching, consulting, and publications now reach a nation-wide audience.

## ***Association of Performing Arts Presenters (APAP)***

---

1211 Connecticut Avenue, NW, Suite 200, Washington, DC 20036

TEL: (202) 833-2787

(888) 820-2787

FAX: (202) 833-1543

E-MAIL: [info@artspresenters.org](mailto:info@artspresenters.org)

WEBSITE: [www.artspresenters.org](http://www.artspresenters.org)

The Association of Performing Arts Presenters (APAP) develops and supports a robust performing arts presenting field and the professionals who work within it.

## ***Business Committee for the Arts***

---

Americans for the Arts, One E. 53rd Street, 2nd Floor, New York, NY 10022

TEL: (212) 223-2787

FAX: (212) 980-4857

WEBSITE: [www.bcainc.org](http://www.bcainc.org)

CONTACT: Timarie Harrigan

The mission of the Business Committee for the Arts, Inc. (BCA) is to ensure that the arts flourish in America by encouraging, inspiring and stimulating businesses to support the arts in the workplace, in education and in the community.

## ***Chorus America***

---

1156 15<sup>th</sup> Street, NW, Suite 310, Washington DC 20005

TEL: (202) 331-7577

FAX: (202) 331-7599

E-MAIL: [service@chorusamerica.org](mailto:service@chorusamerica.org)

WEBSITE: [www.chorusamerica.org](http://www.chorusamerica.org)

CONTACT: Ann Meier Baker, President and CEO, [ann@chorusamerica.org](mailto:ann@chorusamerica.org)

Chorus America's mission is to build a dynamic and inclusive choral community so that more people are transformed by the beauty and power of choral singing.

## ***College Arts Association of America***

---

275 7<sup>th</sup> Avenue, 18<sup>th</sup> Floor, New York, NY 10001

TEL: (212) 691-1051

FAX: (212) 627-2381

E-MAIL: [nyoffice@collegeart.org](mailto:nyoffice@collegeart.org)

WEBSITE: [www.collegeart.org](http://www.collegeart.org)

A newsletter that lists jobs in higher education and museums, including international listings. Published six times a year.

## ***Corporation for Public Broadcasting***

---

401 9<sup>th</sup> Street, NW, Washington DC 20004-2129

TEL: (202) 879-9600  
(800) 272-2190

E-MAIL: [press@cpb.org](mailto:press@cpb.org)

WEBSITE: [www.cpb.org](http://www.cpb.org)

The Corporation for Public Broadcasting is a private, nonprofit corporation created by Congress in 1967. The mission of CPB is to facilitate the development of, and ensure universal access to, non-commercial high-quality programming and telecommunications services. It does this in conjunction with non-commercial educational telecommunications licensees across America.

## ***Dance/USA***

---

1111 16<sup>th</sup> Street NW, Suite 300, Washington DC, 20036

TEL: (202) 833-1717

FAX: (202) 833-2686

E-MAIL: [danceusa@danceusa.org](mailto:danceusa@danceusa.org)

WEBSITE: [www.danceusa.org](http://www.danceusa.org)

Dance/USA sustains and advances professional dance by addressing the needs, concerns, and interests of artists, administrators and organizations. By providing services and national leadership, Dance/USA enhances the infrastructure for dance creation, education and dissemination.

## ***Deaf Artists of America***

---

302 N. Goodman, Suite 205, Rochester, NY 14607

TEL: (716) 244-3460

FAX: (716) 244-3690

## ***Disabled Artists' Network***

---

2701 California Avenue SW, Suite 263, Seattle, WA 98116

TEL: (775) 628-0079

FAX: (775) 330-0784

E-MAIL: [office@disabledartistsnetwork.net](mailto:office@disabledartistsnetwork.net)

WEBSITE: [www.disabledartistsnetwork.net](http://www.disabledartistsnetwork.net)

## ***Foundation Center***

---

79 5<sup>th</sup> Avenue, New York, NY 10003-3076

TEL: (212) 620-4230

(800) 424-9836

FAX: (212) 807-3677

E-MAIL: see web site for choices

WEBSITE: [www.fdncenter.org](http://www.fdncenter.org)

The Foundation Center's mission is to strengthen the nonprofit sector by advancing knowledge about U.S. philanthropy.

## ***Heritage Preservation***

---

1012 14<sup>th</sup> Street, NW, Suite. 1200, Washington DC 20005

TEL: (202) 233-0800

FAX: (202) 233-0807

E-MAIL: [info@heritagepreservation.org](mailto:info@heritagepreservation.org)

WEBSITE: [www.heritagepreservation.org](http://www.heritagepreservation.org)

Heritage Preservation works to ensure the preservation of America's heritage. Our programs and publications provide advice and guidance for the care and maintenance of historic documents & photographs, anthropological artifacts, architecture, books and archives and historic objects and family heirlooms. Programs include Save Outdoor Sculpture!

## ***Institute of Museum & Library Services***

---

1800 M Street NW, 9<sup>th</sup> Floor, Washington DC 20036-5802

TEL: (202) 653-4657

FAX: (202) 653-4600

E-MAIL: [imlsinfo@imls.gov](mailto:imlsinfo@imls.gov)

WEBSITE: [www.imls.gov](http://www.imls.gov)

The Institute of Museum and Library Services is the primary source of federal support for the nation's 122,000 libraries and 17,500 museums. The Institute's mission is to create strong libraries and museums that connect people to information and ideas. The Institute works at the national level and in coordination with state and local organizations to sustain heritage, culture, and knowledge; enhance learning and innovation; and support professional development.

## ***International Child Art Foundation (ICAF)***

---

P.O. Box 58133, Washington, DC 20037

TEL: (202) 530-1000

FAX: (202) 530-1080

E-MAIL: [childart@icaf.org](mailto:childart@icaf.org)

WEBSITE: [www.icaf.org](http://www.icaf.org)

The International Child Art Foundation was founded to serve as the national art and creativity organization for American children and the international arts organization for the world's children. Its mission is "To integrate arts education with science, sport and technology for the development of creativity and empathy - preconditions for sustainable prosperity and peace in the 21st century."

## ***International Sculpture Center***

---

19 Fairgrounds Road, Suite B, Hamilton, NJ 08619

TEL: (609) 689-1051

FAX: (609) 689-1061

WEBSITE: [www.sculpture.org](http://www.sculpture.org)

CONTACT: [Johannah Hutchison, Executive Director,](mailto:Johannah.Hutchison@sculpture.org)  
[johannah@sculpture.org](mailto:johannah@sculpture.org)

The International Sculpture Center (ISC) seeks to expand public understanding and appreciation of sculpture internationally, demonstrate the power of sculpture to educate, effect social change, engage artists and arts professionals in a dialogue to advance the art form, and promote a supportive environment for sculpture and sculptors.

## ***Keep Arts In Schools .org***

---

Douglas Gould and Company, 145 Huguenot Street, Suite 312, New Rochelle, NY 10801-5200

TEL: (914) 833-7093

E-MAIL: [info@keepartsinschools.org](mailto:info@keepartsinschools.org)

WEBSITE: [www.keepartsinschools.org](http://www.keepartsinschools.org)

This website in an online community for arts education advocates, focusing on the efforts and successes of local organizations, communities, teachers and leading voices throughout the country who are all working to Keep Arts in Schools! KeepArtsInSchools.org is a project of the Ford Foundation's Integrating the Arts and Education Reform initiative.

## ***League of American Orchestras***

---

33 West 60th Street, New York, NY 10023

TEL: (212) 262-5161

FAX: (212) 262-5198

E-MAIL: [hnoonan@americanorchestras.org](mailto:hnoonan@americanorchestras.org)

WEBSITE: [www.americanorchestras.org](http://www.americanorchestras.org)

CONTACT: Heather Noonan, Vice President for Advocacy  
The League of American Orchestras leads, encourages, and supports America's orchestras while communicating to the public the value and importance of orchestras and the music they perform.

## ***Meet the Composer***

---

90 John Street, Suite 312, New York, NY 10038

TEL: (212) 645-6949

FAX: (212) 645-9669

E-MAIL: [mtc@meetthecomposer.org](mailto:mtc@meetthecomposer.org)

WEBSITE: [www.meetthecomposer.org](http://www.meetthecomposer.org)

Meet The Composer's mission is to increase opportunities for composers by fostering the creation, performance, dissemination, and appreciation of their music.

## ***New York Foundation for the Arts (NYFA)***

---

20 Jay Street, 7th Floor, Brooklyn, NY 11201

TEL: (212) 366-6900

FAX: (212) 366-1778

E-MAIL: [nyfainfo@nyfa.org](mailto:nyfainfo@nyfa.org)

WEBSITE: [www.nyfa.org](http://www.nyfa.org)

NYFA's mission is to empower artists at critical stages in their creative lives. NYFA is the largest provider of grants, services, and information to artists working in all disciplines in the United States.

## ***The Performing Arts Alliance***

---

1211 Connecticut Avenue, NW, Ste. 200, Washington, DC  
20036

TEL: (202) 207-3850

FAX: (202) 833-1543

E-MAIL: [info@theperformingartsalliance.org](mailto:info@theperformingartsalliance.org)

WEBSITE: [www.theperformingartsalliance.org](http://www.theperformingartsalliance.org)

The Performing Arts Alliance is a national network of more than 4,100 members comprising the professional, nonprofit performing arts and presenting fields. For 30 years, the Performing Arts Alliance has been the premiere advocate for America's professional nonprofit arts organizations, artists and their publics before the US Congress and key policy makers. Through legislative and grassroots action, the Performing Arts Alliance advocates for national policies that recognize, enhance and foster the contributions the performing arts make to America.

