

PUBLIC ART COLLECTIONS

Spokane City Hall Art Collection
Displayed throughout City Hall and includes over 50 artworks by Northwest artists. For more information, contact Spokane Arts Commission, City Hall, at 625-6050.

Spokane Fire Stations Art Collection

- Fire Station #1 and Administration Building, Browne & Riverside, "The Falls at Station 1" by Steve Adams and "Dalmation Door" by Mel McCuddin.
- Fire Station #2, North Foothills & Nevada, "Weathervane" by MacKenzie Hawley.
- Fire Station #3, 1713 W. Indiana, "Velocity" by Tom Askman.
- Fire Station #4, Riverside & 1st Avenue, Paula Turnbull, SNJM, Sculpture.

- Fire Station #14, 1807 S. Ray, Stained Glass Window by Rebecca Laurence.
- Fire Station #17, 5121 W. Lowell Road, "Blue Portico with Dalmation Spot Walkway" by Jo Fyfe and Patty Dyke Haag.
- Fire Station #18, 120 E. Lincoln Road, "Banner of Service" by Hazen Audel and Robert Sevilla.
- Fire Maintenance Facility & Training Field House, 1608 N. Rebecca, "Firefighters' Wall" brick and aluminum sculpture by David Saling.

Spokane Falls Community College and Spokane Community College

Collections include public art by Terry Buckendorf, Joellen Benjamin Fay, Nancy Souther, Brian Goldbloom, Robert and Jill Hill, Thomas Lindsay, Paula Turnbull, SNJM, Jack Dollhausen, David Wilson, Deborah Giannini, Carolyn McKay, Rosemary Pittman, Terrence Reed, and Ted Waddell.

Spokane Public Library

- Downtown Library, 906 W. Main; 444-5336, "Mnemosyne's Alphabet" by Dennis Evans, and "The Twelve Tablets" by Sandra Stone.
- East Side Branch, 524 S. Stone; 444-5375, "Kaleidoscope Panels" by Victoria Street.
- Hillyard Branch, 4005 N. Cook; 444-5380, "Untitled" by Patricia Barkley and Steve Adams.
- Indian Trail Branch, 4909 W. Barnes; 444-5395, "Love Runs Through It" and "Thoughts and Ideas" by Ilse Kilian-Tan.
- Shadle Branch, 2111 W. Wellesley; 444-5398, "Untitled" by Mike Juetten.
- South Hill Branch, 3324 S. Perry; 444-5385, "The Magical Thing in the Attic" by Harold Balazs.

Harold Balazs
Untitled (lantern)
Riverfront Park

Gonzaga University

502 E. Boone, has sculptures on public view, including works by Auguste Rodin located in the Administration Building, and bronze sculptures by Deborah Copenhaver and Enzo Plazzotta.

Spokane Public School District 81

For a complete listing of commissioned art in Spokane Public Schools, contact the Washington State Arts Commission.

- John Benn and Colleen Gallagher, Holmes Elementary, 2600 W. Sharp, ceramic tile.
- Patricia Hartleben, Whitman Elementary, 5400 N. Helena, woven fabric wall relief.
- Dick Ibach, Bemiss Elementary, 2323 E. Bridgeport, painting.
- Louise Kodis, Willard Elementary, 500 W. Longfellow, banner.
- Howard Meehan, Spokane Skills Center, 4141 N. Regal, etched glass relief.
- Bill Rades, Longfellow Elementary, 800 E. Providence, painted wood relief.



DOWNTOWN AREA PUBLIC SCULPTURE

The Sculpture Walk is a pleasant outdoor sculpture viewing experience which follows the south bank of the river east to west from Division to Post. The Walk includes:

- Patrick Zentz, "Riverpoint Observatory" aluminum, steel, glass, concrete. Health Science Building, WSU Spokane.
- Michihiro Kosuge, "Cooperation" granite and basalt. Riverpoint Campus on Trent.
- Peter Reiquam, "Light Reading" granite, bronze. Academic Center, WSU Spokane.
- Anatoli Abgudae, "Shamil" bronze. East of C.I. Shenanigans.
- Jody Pinto, "East-West Arbor" cedar and honeysuckle, surrounded by "Gift Gardens" representing Spokane's Sister Cities. Spokane Convention Center Campus.
- Glenn Emmons, "From this Earth" bronze. Spokane Convention Center.
- Ken Spiering, "The Call and the Challenge" bronze. Riverfront Park.
- Glen Michaels, "Moon Crater" bronze. Riverfront Park.
- George Tsutakawa, "Aluminum Fountain" aluminum. INB Performing Arts Center.
- Harold Balazs, "Centennial Sculpture" floating aluminum sculpture. Riverfront Park.
- Ken Spiering, "The Childhood Express" steel and concrete. Riverfront Park.
- Paula Turnbull, SNJM, "Goat" corten steel. Riverfront Park.
- Deborah Copenhaver-Fellows, "Vietnam Veterans' Memorial" bronze sculpture. Riverfront Park.
- Harold Balazs and Bob Perron "Rotary Riverfront Fountain" steel. Riverfront Park.



Robert Harrison
"Cassiopeia & Cepheus"
Gonzaga University

- Harold Balazs, aluminum sculpture, wood and bronze wall relief. Public Safety Bldg.
- Vincent DeFelice, "Joe Fan" bronze. Joe Albi Stadium.
- Ean Eldred and John Kashiwabara, screen, steel. Wastewater Treatment Plant.
- David Govedare, "Antoine Plante" metal sculpture. Plantes Ferry Park, Spokane County.

See *The Davenport District Brochure* for artist-made benches.

SPOKANE AREA PUBLIC SCULPTURE

- Paula Turnbull, SJNM, Mike Cmos Memorial, copper sculpture. Water Reclamation Facility.
- David Govedare, "The Dreaming Place" steel. Parks Department Operations Facility.
- Shani Marchant, "Caribbean Dream" and "Forty Fathoms Below" watercolor. Public Defender/ Prosecutor Bldg.
- Tom Otterness, "The Return of the Four-Leggeds" bronze. Northwest Museum of Arts & Culture.
- David Saling, aluminum sculpture. Joe Albi Stadium.
- John Young, "Bringing Home the Wishing Rock" basalt, granite, galvanized steel. Spokane Intermodal Transportation Center.
- Murals, created by Spokane youth under the mentorship of professional artists, adorn railroad and freeway underpasses throughout the city.

David Govedare
"The Joy of Running Together"
Riverfront Park



Start here.

Spokane's galleries, museums, and public art collections can all be found right here. Locations, opening times, and phone numbers are listed to make your search as easy as possible.

For additional exhibits, openings, performances, and concerts go to spokanearts.org.



spokane arts

spokanearts.org
EVENTS • PERFORMANCES • OPENINGS

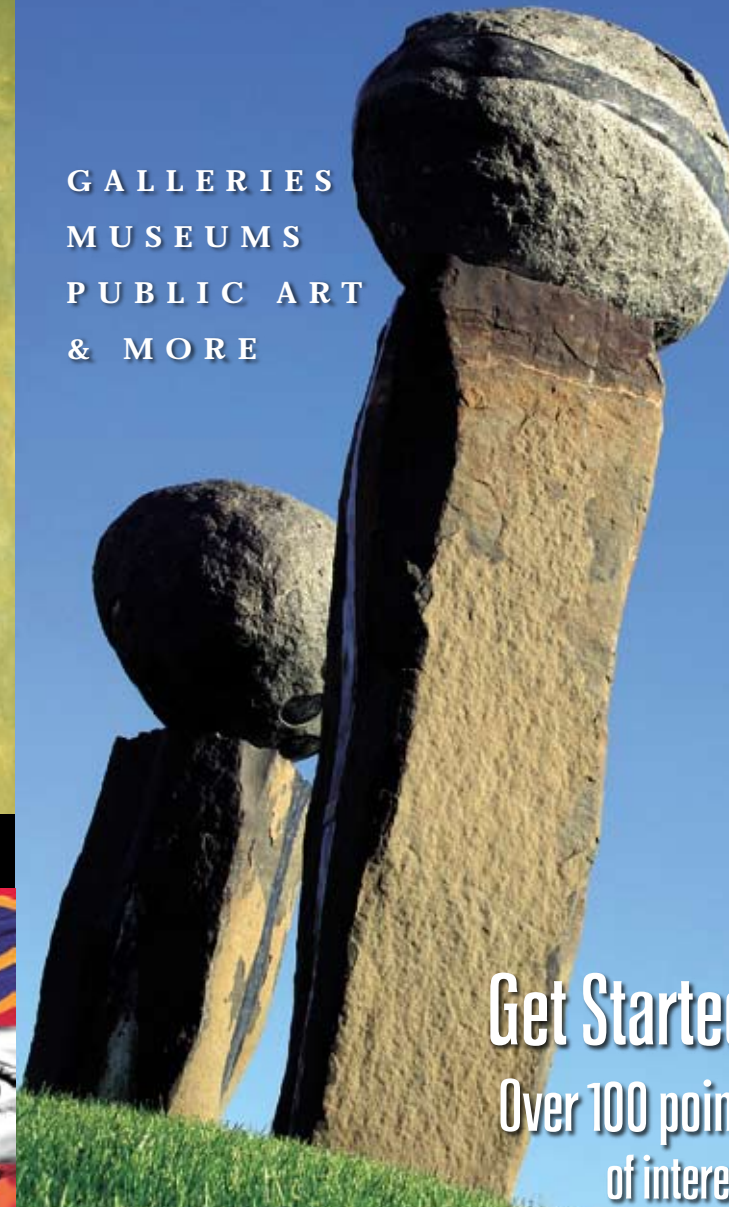
Spokane Arts Commission

808 West Spokane Falls Blvd.
Spokane, WA 99201-3333
arts@spokanecity.org

P / 509.625.6050
F / 509.625.6777

SPOKANE ART SITES

GALLERIES
MUSEUMS
PUBLIC ART
& MORE

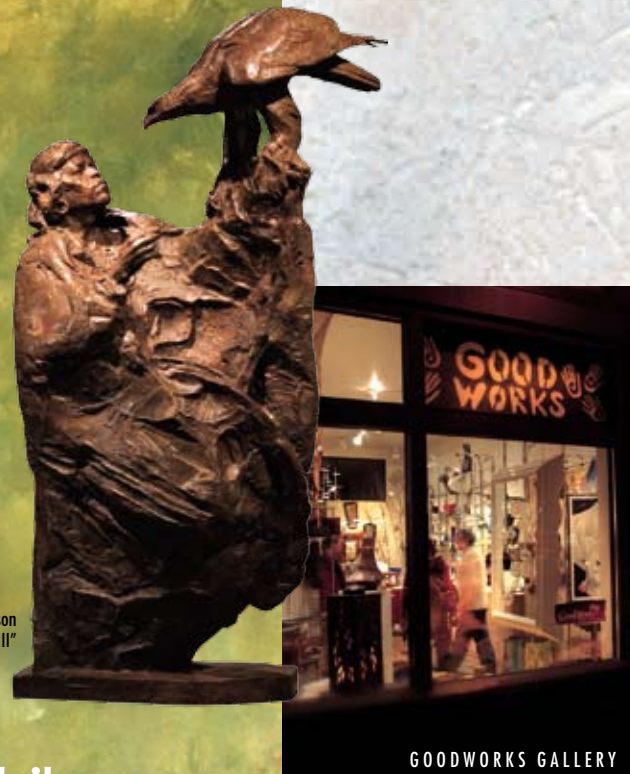


Get Started.
Over 100 points
of interest.

Inspiration on display daily.

Spokane's growing art community has more to offer than ever before. The Museum of Arts and Culture and the newly formed arts district—located appropriately near the recently restored historic Davenport Hotel—are just a few of the exciting new additions.

For additional arts information and performances go to spokanearts.org.



George Carlson
"Boy and Eagle II"



GOODWORKS GALLERY



Tom Otterness
"Return of the Four-Leggeds"

Area 58, 3036 N. Monroe St; 327-0427. Featuring books, fine art, antiques, and collectibles.

Art @ Work Gallery, 2316 W. 1st; 363-5318. A rental and sale program of the Northwest Museum of Arts & Culture, featuring work by over 70 local and regional artists. northwestmuseum.org

Artisans' Wares, 1009 W. 1st; 456-6030. Featuring fine American craft. artisanswares.com

Artist's Tree, 828 W. Sprague; 456-2300. Artist boutique featuring works by local and regional artists.

Avenue West Gallery, 1021 W. 1st; 456-3178. Local artist co-op in the heart of downtown.

The Bing Crosby Theater Gallery, 901 W. Sprague; 227-7638. Changing exhibits, open during performances or by appointment. mettheater.com

CenterStage, 2nd floor Theatre Hallway Gallery, 1017 W. First; 747-8243. Invitational exhibitions. spokanecenterstage.com

DOWNTOWN AREA GALLERIES & MUSEUMS

Chase Gallery at City Hall, 808 W. Spokane Falls Blvd.; 625-6050. Mon 8am-9pm, Tue-Fri 8am-5pm. A program of the Spokane Arts Commission. spokanearts.org

Dean Davis Photography & Gallery, 216 W. Pacific; 456-8799. Invitational exhibitions. deandavis.com

Gallery of Thum, 106 S. Madison; 624-1519. Featuring art by regional artists. galleryofthum.com

Global Folk Art, 35 W. Main; 838-0664. Unique non-profit gallery with items from around the world. Spokane's only fair trade store. globalfolkart.org

Gellhorn Gallery at Spokane interPLAYERS, 174 S. Howard; 455-7529. Invitational exhibitions. interplayers.com

GoodWorks Gallery, 1019 W. 1st; 624-2510. Fine crafts gallery featuring the work of regional artists in handcrafted jewelry, ceramics, glass, sculpture, and textile weavings. goodworksart.com

Huneke Gallery, Spokane Art School, 920 N. Howard; 328-0900. Features ongoing exhibitions by regional artists and special annual events. spokaneartschool.org

Kolva Sullivan Gallery, 115 S. Adams; 458-5517. Contemporary ceramics.

Kress Gallery, River Park Square, 808 W. Main; 456-3413. Located behind Atrium Cafes on level 3, features revolving displays of artwork by local and regional artists.

Gina Freuen



Lee Frame Shoppe, 1407 W. 1st; 624-2715. Mon-Fri 9am-5pm, Sat 10am-3pm. Custom framing and gallery.

Lorinda Knight Gallery, 523 W. Sprague; 838-3740. Tues-Sat 11am-6pm. Monthly exhibits of contemporary art, representing over 40 artists on two levels. lorindaknight.com

Mobius Kids, 808 W. Main, lower level; 624-KIDS (5437). An Inland Northwest discovery museum. mobiusspokane.org

Pacific Flyway Art Gallery, 313 E. Sprague; 747-0812. Wildlife, floral, landscape, sporting, and seasonal works of art.

Pigeon Hole, 620 S. Washington; 838-0779. pigeonholegallery.com

Pottery Place Plus in Auntie's Bookstore, 203 N. Washington; 327-6920. Potters and craftspeople display works of handcrafted ceramics, metal, wood, glass, and fiber. potteryplaceplus.com



ARTISANS' WARES

Trackside Studio & Gallery, 115 S. Adams; 462-5653. Ceramics.

Spokane Civic Theatre Gallery, 1020 N. Howard; 325-1413. Invitational one-person exhibitions. spokanecivictheatre.com

Spokane Public Library Gallery, 906 W. Main, 1st floor; 444-5312. Tues-Wed 10am-8pm, Thurs-Sat 10am-6pm.



Northwest Museum of Arts & Culture
2316 W. 1st; 456-3931. Located in Spokane's historic Browne's Addition. Ongoing and revolving American Indian, regional history, and visual arts exhibits. northwestmuseum.org

SPOKANE AREA GALLERIES & MUSEUMS

Art, Music & More, Spokane Valley Mall, 14700 East Indiana Avenue; 842-2492. Local artists and musicians showcased.

Twenty-Ninth Avenue Art Works, 3128 E. 29th; 534-7959. Tues-Sat 10am-5pm. Local contemporary exhibitions.

A Cat's Eye Gallery, 225 W. Indiana; 389-2930. Thurs-Sat 12pm-5:30pm. Interesting objects and funky stuff. acatseyegallery.com

Art and Soul, 1601 W. Pacific; 624-4957. Thurs-Sun 2pm-5pm and by appointment.

Corbin Art Center, 507 W. 7th; 625-6677. Mon-Thurs 9am-4pm, evenings during class times. Located in the historic Daniel Corbin Mansion, featuring monthly exhibits. spokaneartcenter.org

Crawford Gallery, 316 E. Crawford, Deer Park, Washington; 276-8884. Tues-Thurs 10am-2pm. Featuring contemporary artwork by regional and local artists.

Down Under Gallery & Custom Framing, 12505 E. Sprague; 624-4179. Originals by local artists, bronze sculptures, Native American woodcarvings, limited edition prints.

Everett Gallery, 1401 N. Argonne Rd., Spokane Valley; 893-3900. Mon-Sat 10am-9pm, Sun 11am-6pm. Custom framing and gallery. everettgallery.net

Eastern Washington University Gallery of Art and Digital Gallery, EWU Fine Arts Bldg., Art 140, Cheney Campus; 359-2494. Mon-Fri 8am-5pm. Exhibitions by students and local, regional, and national artists. ewu.edu



Stephen Rue
"One Big Self"

Gallery 1889, 2124 W. 2nd; 624-4957. Specializing in Spokane history and early sheet music. Call for appointment. gallery1889.com

Jundt Art Museum at Gonzaga University, 502 E. Boone; 323-6611. Local, regional, national, and international artists, and Gonzaga University's collections including Chihuly Glass Art and Rodin Sculpture. gonzaga.edu

Koehler Art Gallery at Whitworth College, 300 W. Hawthorne Road; 777-3258. Mon-Fri 8am-6pm. Monthly changing exhibitions of local and college artists. whitworth.edu

Mukogawa Fort Wright Institute and Japanese Cultural Center, 4000 W. Randolph Road; 328-2971. Mon-Fri 9:30am-4:30pm. Collections of art, crafts, and traditional dress. mfwl.org

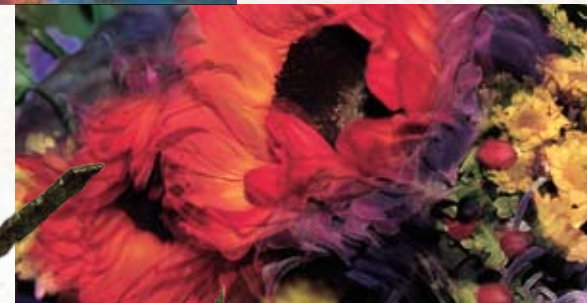
Ryan House Studio of Stained Glass, 9423 N. Division; 327-4591. Custom original designs, restoration and repair.

Spectrum Framing & Gallery, 21 W. 34th; 747-5267. Original graphics, watercolors, mixed media, and fiber from local, regional, and international artists. spectrum-art.com

Kathleen Cavender
"Coming to Terms"



Gay Waldman
"Narrow Red Bouquet"



Marilyn Kuksh
"Singing Branches"

Spokane Art Supply, 1303 N. Monroe; 327-6628. Mon-Fri 8:30am-6pm, Sat 10am-5pm, Sun 12pm-5pm. Changing monthly exhibits featuring local and regional artists. myartsupply.com

Spokane Falls Community College Art Gallery, 3410 W. Fort George Wright Drive; 533-3746. Mon-Fri 8am-4pm. Works by students, regional, national, and international artists. spokanefalls.edu

The Parlor Gallery at Paulsen House, the Episcopal Diocese of Spokane, 245 E. 13th Avenue; 455-6661. Featuring local and regional artists works.

Tinman Artworks, 811 W. Garland; 325-1500. Fine art gallery and bookshop with art by local and regional artists. tinmanartworks.com

William Grant Gallery & Framing, 820 W. Francis; 484-3535. Mon-Fri 9am-6pm, Sat 9am-4pm. Bi-monthly exhibits and limited edition prints.